

Datasheet for ABIN7320362  
**SERPINB8 Protein (His tag)**[Go to Product page](#)

## 1 Image

## Overview

Quantity:	100 µg
Target:	SERPINB8
Origin:	Mouse
Source:	Baculovirus infected Insect Cells
Protein Type:	Recombinant
Purification tag / Conjugate:	This SERPINB8 protein is labelled with His tag.

## Product Details

Purpose:	Recombinant Mouse SerpinB8 Protein (His Tag)
Sequence:	Met 1-Pro 374
Characteristics:	A DNA sequence encoding the mouse SERPINB8 (NP_035589.1) (Met 1-Pro 374) was expressed, with a C-terminal polyhistidine tag.
Purity:	> 94 % as determined by SDS-PAGE
Endotoxin Level:	< 1.0 EU per µg of the protein as determined by the LAL method.

## Target Details

Target:	SERPINB8
Alternative Name:	SerpinB8 ( <a href="#">SERPINB8 Products</a> )
Background:	Background: Serpins are the largest and most diverse family of serine protease inhibitors which are involved in a number of fundamental biological processes such as blood coagulation, complement activation, fibrinolysis, angiogenesis, inflammation and tumor suppression and are

## Target Details

expressed in a cell-specific manner. Mouse SerpinB8, also known as Cytoplasmic antiproteinase 2, Peptidase inhibitor 8, SerpinB8, PI-8, SERPINB8 and CAP2, is a member of the Serpin superfamily. SERPINB8 was broadly expressed. In normal neuroendocrine tissues, strongest SerpinB8 expression was detected in islets of Langerhans of the pancreas. Moderate SerpinB8 expression was observed in neuroendocrine cells of the thyroid, adrenal cortex, colon, and pituitary gland. In the pancreas, SerpinB8 is specifically expressed by insulin-producing beta cells, and can be used as an additional diagnostic immunohistochemical marker. Mouse SerpinB8 distribution alters during kidney regeneration, possibly to control a prohormone convertase involved in inflammation or tissue repair.

Synonym: CAP-2,CAP2,NK10,ovalbumin,Spi8

Molecular Weight: 43.6 kDa

NCBI Accession: [NP\\_035589](#)

## Application Details

Restrictions: For Research Use only

## Handling

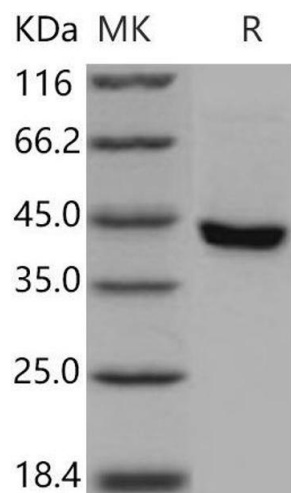
Format: Lyophilized

Reconstitution: Please refer to the printed manual for detailed information.

Buffer: Lyophilized from sterile 50 mM Tris, 100 mM NaCl, pH 8.0

Storage: 4 °C,-20 °C,-80 °C

Storage Comment: Generally, lyophilized proteins are stable for up to 12 months when stored at -20 to -80°C. Reconstituted protein solution can be stored at 4-8°C for 2-7 days. Aliquots of reconstituted samples are stable at < -20°C for 3 months.



**Western Blotting**

**Image 1.**