

Datasheet for ABIN7320368

REG4 Protein (His tag)[Go to Product page](#)**1** Image

Overview

Quantity:	100 µg
Target:	REG4
Origin:	Mouse
Source:	HEK-293 Cells
Protein Type:	Recombinant
Biological Activity:	Active
Purification tag / Conjugate:	This REG4 protein is labelled with His tag.

Product Details

Purpose:	Recombinant Mouse REG4/RELP Protein (His Tag)(Active)
Sequence:	Met 1-Thr 157
Characteristics:	A DNA sequence encoding mouse REG4 (NP_080604.2) (Met 1-Thr 157) was expressed with the polyhistidine tag at the C-terminus.
Purity:	> 95 % as determined by SDS-PAGE
Endotoxin Level:	< 1.0 EU per µg of the protein as determined by the LAL method.
Biological Activity Comment:	Measured by the ability of the immobilized protein to support the adhesion and proliferation of HCT-116 human colorectal carcinoma cells (ATCC: CCL-247) under low serum conditions. When 5 x 10E4 cells/well are added to mouse REG4 coated plates (0.16 µg/ml and 100 µl/well), >70% cell will adhere after 60 minutes at 37°C.

Target Details

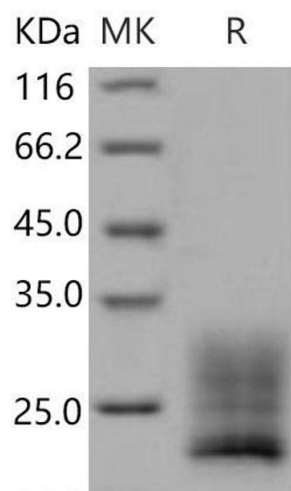
Target:	REG4
Alternative Name:	REG4/RELP (REG4 Products)
Background:	<p>Background: Regenerating islet-derived protein 4, also known as REG-like protein, REG4, GISP and RELP, a member of the regenerating gene family belonging to the calcium (C-type) dependent lectin superfamily, has been found to be involved in malignancy in several different organs including the stomach, colorectum, pancreas and prostate. It is highly expressed in the gastrointestinal tract and markedly up-regulated in colon adenocarcinoma, pancreatic cancer, gastric adenocarcinoma, and inflammatory bowel disease. Expression of the Reg4 in different cell types has been associated with regeneration, cell growth and cell survival, cell adhesion and resistance to apoptosis. REG4 protein overexpression is associated with an unfavorable response to preoperative chemoradiotherapy and may be used as a predictive biomarker clinically. REG4 may play an important role in the development and progression of colorectal cancer, as well as in intestinal morphogenesis and epithelium restitution.</p> <p>Synonym: 2010002L15Rik,GISP,RELP</p>
Molecular Weight:	17.5 kDa
NCBI Accession:	NP_080604

Application Details

Restrictions:	For Research Use only
---------------	-----------------------

Handling

Format:	Lyophilized
Reconstitution:	Please refer to the printed manual for detailed information.
Buffer:	Lyophilized from sterile PBS, pH 7.4
Storage:	4 °C,-20 °C,-80 °C
Storage Comment:	<p>Generally, lyophilized proteins are stable for up to 12 months when stored at -20 to -80°C. Reconstituted protein solution can be stored at 4-8°C for 2-7 days. Aliquots of reconstituted samples are stable at < -20°C for 3 months.</p>



Western Blotting

Image 1.