

Datasheet for ABIN7320383

REG3A Protein (His tag)**1** Image[Go to Product page](#)

Overview

| | |
|-------------------------------|--|
| Quantity: | 100 µg |
| Target: | REG3A |
| Origin: | Mouse |
| Source: | HEK-293 Cells |
| Protein Type: | Recombinant |
| Purification tag / Conjugate: | This REG3A protein is labelled with His tag. |

Product Details

| | |
|------------------|--|
| Purpose: | Recombinant Mouse REG3A/HIP Protein (His Tag) |
| Sequence: | Met1-Gln175 |
| Characteristics: | A DNA sequence encoding the extracellular domain (Met1-Gln175) of mouse REG3A (NP_035389.1) precursor was expressed with a C-terminal polyhistidine tag. |
| Purity: | > 95 % as determined by SDS-PAGE |
| Endotoxin Level: | < 1.0 EU per µg of the protein as determined by the LAL method. |

Target Details

| | |
|-------------------|---|
| Target: | REG3A |
| Alternative Name: | REG3A/HIP (REG3A Products) |
| Background: | Background: Regenerating islet-derived protein 3-alpha, also known as Regenerating islet-derived protein III-alpha, REG-3-alpha, REG3A, and HIP, is secreted protein which contains one C-type lectin domain. REG3A is constitutively expressed in intestine, and is a pancreatic |

Target Details

secretory protein that may be involved in cell proliferation or differentiation. It is overexpressed during the acute phase of pancreatitis and in some patients with chronic pancreatitis. REG3A and REG1A proteins are both involved in liver and pancreatic regeneration and proliferation. REG3A is also a stress protein involved in the control of bacterial proliferation. REG3A is down-regulated in most primary human gastric cancer cells, and might be useful in the diagnosis of gastric cancer. Additionally, REG3A is a target of beta-catenin signaling in Huh7 hepatoma cells. The REG1A and REG3A are downstream targets of the Wnt pathway during liver tumorigenesis. Synonym: AV063448, Rega3a

Molecular Weight: 18 kDa

NCBI Accession: [NP_035389](#)

Application Details

Restrictions: For Research Use only

Handling

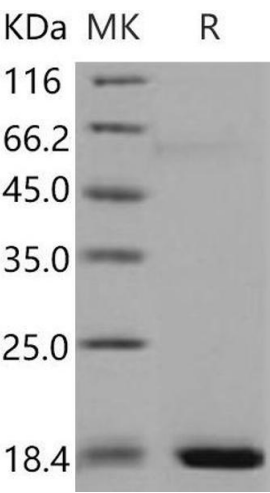
Format: Lyophilized

Reconstitution: Please refer to the printed manual for detailed information.

Buffer: Lyophilized from sterile PBS, pH 7.4

Storage: 4 °C, -20 °C, -80 °C

Storage Comment: Generally, lyophilized proteins are stable for up to 12 months when stored at -20 to -80°C. Reconstituted protein solution can be stored at 4-8°C for 2-7 days. Aliquots of reconstituted samples are stable at < -20°C for 3 months.



Western Blotting

Image 1.