

Datasheet for ABIN7320442

CD166 Protein (His tag)**1** Image[Go to Product page](#)

Overview

Quantity:	100 µg
Target:	CD166 (ALCAM)
Origin:	Mouse
Source:	HEK-293 Cells
Protein Type:	Recombinant
Biological Activity:	Active
Purification tag / Conjugate:	This CD166 protein is labelled with His tag.

Product Details

Purpose:	Recombinant Mouse ALCAM/CD166 Protein (His Tag) (Active)
Sequence:	Met 1-Lys 527
Characteristics:	A DNA sequence encoding the extracellular domain (Met 1-Lys 527) of mouse ALCAM (NP_033785.1) precursor was expressed, fused with a polyhistidine tag at the C-terminus.
Purity:	> 98 % as determined by SDS-PAGE
Endotoxin Level:	< 1.0 EU per µg of the protein as determined by the LAL method.
Biological Activity Comment:	Immobilized mouse ALCAM-His at 10 µg/ml (100 µl/well) can bind mouse CD6-Fc, The EC50 of mouse CD6-Fc is 0.08-0.18 µg/ml.

Target Details

Target:	CD166 (ALCAM)
---------	---------------

Target Details

Alternative Name:	ALCAM/CD166 (ALCAM Products)
Background:	<p>Background: Activated leukocyte cell adhesion molecule (ALCAM)/Cluster of differentiation (CD166) is a type I transmembrane cell adhesion molecule belonging to the Ig superfamily and a ligand for CD6 that is expressed on T lymphocytes. The extracellular domain of ALCAM contains five Ig-like domains (three Ig-like C2-type domains and two Ig-like V-type domains), of which the amino-terminal V1 domain is essential for ligand binding and ALCAM-mediated cell aggregation. ALCAM mediates both heterophilic (ALCAM-CD6) and homophilic (ALCAM-ALCAM) cell-cell interactions. ALCAM/CD6 interaction plays a role in T cell development and T cell regulation, as well as in the binding of T- and B-cells to activated leukocytes. Recently, homophilic (ALCAM-ALCAM) adhesion was shown to play important roles in tight cell-to-cell interaction and regulation of stem cell differentiation. While expressed in a wide variety of tissues, ALCAM is usually restricted to subsets of cells involved in dynamic growth and/or migration, including neural development, branching organ development, hematopoiesis, immune response and tumor progression. And CD166 is regarded as a potential novel breast cancer indicator and therapeutic target.</p> <p>Synonym: AI853494, BEN, CD166, DM-GRASP, MuSC, SC1,CD166 antigen,cluster of differentiation 166, CD166, activated leucocyte cell adhesion molecule, CD6 ligand, Protein DM-GRASP,CD6L,MEMD</p>

Molecular Weight: 57.7 kDa

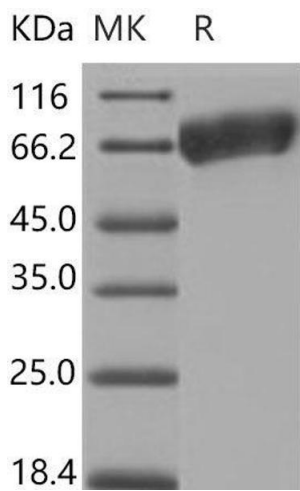
NCBI Accession: [NP_033785](#)

Application Details

Restrictions: For Research Use only

Handling

Format:	Lyophilized
Reconstitution:	Please refer to the printed manual for detailed information.
Buffer:	Lyophilized from sterile PBS, pH 7.4
Storage:	4 °C,-20 °C,-80 °C
Storage Comment:	Generally, lyophilized proteins are stable for up to 12 months when stored at -20 to -80°C. Reconstituted protein solution can be stored at 4-8°C for 2-7 days. Aliquots of reconstituted samples are stable at < -20°C for 3 months.



Western Blotting

Image 1.