

Datasheet for ABIN7320443

**CD166 Protein (His tag,Fc Tag)**[Go to Product page](#)**1** Image

## Overview

Quantity:	100 µg
Target:	CD166 (ALCAM)
Origin:	Mouse
Source:	HEK-293 Cells
Protein Type:	Recombinant
Biological Activity:	Active
Purification tag / Conjugate:	This CD166 protein is labelled with His tag,Fc Tag.

## Product Details

Purpose:	Recombinant Mouse ALCAM/CD166 Protein (His & Fc Tag)(Active)
Sequence:	Met 1-Lys 527
Characteristics:	A DNA sequence encoding the extracellular domain (Met 1-Lys 527) of mouse ALCAM (NP_033785.1) precursor was fused with the C-terminal polyhistidine-tagged Fc region of human IgG1 at the C-terminus.
Purity:	> 95 % as determined by SDS-PAGE
Endotoxin Level:	< 1.0 EU per µg of the protein as determined by the LAL method.
Biological Activity Comment:	Immobilized mouse CD6-His at 10 µg/ml (100 µl/well) can bind mouse ALCAM-Fc2h, The EC50 of mouse ALCAM-Fc2h is 0.12-0.28 µg/ml.

## Target Details

Target:	CD166 (ALCAM)
---------	---------------

## Target Details

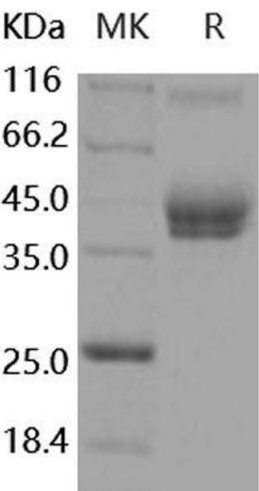
Alternative Name:	ALCAM/CD166 ( <a href="#">ALCAM Products</a> )
Background:	<p>Background: Activated leukocyte cell adhesion molecule (ALCAM)/Cluster of differentiation (CD166) is a type I transmembrane cell adhesion molecule belonging to the Ig superfamily and a ligand for CD6 that is expressed on T lymphocytes. The extracellular domain of ALCAM contains five Ig-like domains (three Ig-like C2-type domains and two Ig-like V-type domains), of which the amino-terminal V1 domain is essential for ligand binding and ALCAM-mediated cell aggregation. ALCAM mediates both heterophilic (ALCAM-CD6) and homophilic (ALCAM-ALCAM) cell-cell interactions. ALCAM/CD6 interaction plays a role in T cell development and T cell regulation, as well as in the binding of T- and B-cells to activated leukocytes. Recently, homophilic (ALCAM-ALCAM) adhesion was shown to play important roles in tight cell-to-cell interaction and regulation of stem cell differentiation. While expressed in a wide variety of tissues, ALCAM is usually restricted to subsets of cells involved in dynamic growth and/or migration, including neural development, branching organ development, hematopoiesis, immune response and tumor progression. And CD166 is regarded as a potential novel breast cancer indicator and therapeutic target.</p> <p>Synonym: AI853494,BEN,CD166,DM-GRASP,MuSC,SC1</p>
Molecular Weight:	84.2 kDa
NCBI Accession:	<a href="#">NP_033785</a>

## Application Details

Restrictions:	For Research Use only
---------------	-----------------------

## Handling

Format:	Lyophilized
Reconstitution:	Please refer to the printed manual for detailed information.
Buffer:	Lyophilized from sterile PBS, pH 7.4
Storage:	4 °C,-20 °C,-80 °C
Storage Comment:	<p>Generally, lyophilized proteins are stable for up to 12 months when stored at -20 to -80°C.</p> <p>Reconstituted protein solution can be stored at 4-8°C for 2-7 days. Aliquots of reconstituted samples are stable at &lt; -20°C for 3 months.</p>



Western Blotting

Image 1.