

Datasheet for ABIN7320462

CD166 Protein (Fc Tag)**1** Image[Go to Product page](#)

Overview

| | |
|-------------------------------|---|
| Quantity: | 50 µg |
| Target: | CD166 (ALCAM) |
| Origin: | Mouse |
| Source: | Human Cells |
| Protein Type: | Recombinant |
| Purification tag / Conjugate: | This CD166 protein is labelled with Fc Tag. |

Product Details

| | |
|------------------|---|
| Purpose: | Recombinant Mouse ALCAM/CD166 Protein (Fc Tag) |
| Sequence: | Trp28-Lys527 |
| Characteristics: | Recombinant Mouse Activated Leukocyte Cell Adhesion Molecule is produced by our Mammalian expression system and the target gene encoding Trp28-Lys527 is expressed with a Fc tag at the C-terminus. |
| Purity: | > 95 % as determined by SDS-PAGE |
| Endotoxin Level: | < 1.0 EU per µg as determined by the LAL method. |

Target Details

| | |
|-------------------|---|
| Target: | CD166 (ALCAM) |
| Alternative Name: | ALCAM/CD166 (ALCAM Products) |
| Background: | Background: Activated leukocyte cell adhesion molecule (ALCAM), also named as CD166 and MEMD, is a type1 transmembrane glycoprotein of immunoglobulin superfamily, which mediates |

Target Details

homotypic and heterotypic interactions between cells. ALCAM interacts with high affinity with CD6 Molecule but weaker homotypic (ALCAM-ALCAM) interactions have also been described. ALCAM-CD6 interactions play an important role in the maintenance of T cell activation, proliferation as well as in formation of immune synapse between antigen-presenting cell and lymphocytes. ALCAM is expressed on a wide variety of cells, particularly on activated lymphocytes, dendritic cells and monocytes, and on various epithelial cell types. It is also involved in multiple processes including embryogenesis, hematopoiesis, angiogenesis, and immune response. While expressed in a wide variety of tissues, ALCAM is usually restricted to subsets of cells in most adult tissues. Recently studies showed ALCAM has prognostic relevance in several human carcinomas, and it has been used as a biomarker for several tumor entities, including melanoma, gynecologic, urologic, and gastrointestinal cancers.

Synonym: AI853494, BEN, CD166, DM-GRASP, MuSC, SC1,CD166 antigen,cluster of differentiation 166, CD166, activated leucocyte cell adhesion molecule, CD6 ligand, Protein DM-GRASP,CD6L,MEMD

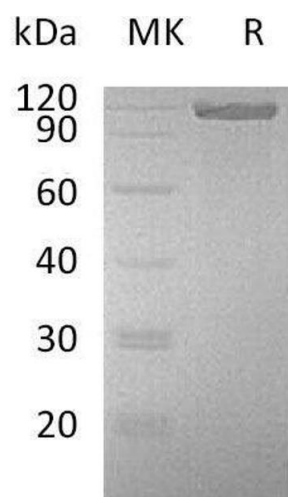
| | |
|-------------------|---------------------------|
| Molecular Weight: | 83.3 kDa |
| NCBI Accession: | NP_033785 |

Application Details

| | |
|---------------|-----------------------|
| Restrictions: | For Research Use only |
|---------------|-----------------------|

Handling

| | |
|------------------|---|
| Format: | Lyophilized |
| Reconstitution: | Please refer to the printed manual for detailed information. |
| Buffer: | Lyophilized from a 0.2 µm filtered solution of PBS, pH 7.4. |
| Storage: | 4 °C,-20 °C,-80 °C |
| Storage Comment: | Generally, lyophilized proteins are stable for up to 12 months when stored at -20 to -80°C. Reconstituted protein solution can be stored at 4-8°C for 2-7 days. Aliquots of reconstituted samples are stable at < -20°C for 3 months. |



Western Blotting

Image 1.