



Datasheet for ABIN7320465

IL-1 beta Protein



[Go to Product page](#)

1 Image

Overview

Quantity:	100 µg
Target:	IL-1 beta (IL1B)
Origin:	Mouse
Source:	Escherichia coli (E. coli)
Protein Type:	Recombinant
Biological Activity:	Active

Product Details

Purpose:	Recombinant Mouse IL-1 beta/IL1B Protein (Active)
Sequence:	Val 118-Ser 269
Characteristics:	A DNA sequence encoding the mature form of mouse IL1 β (P10749) (Val 118-Ser 269) was expressed, with an initial Met at the C-terminus.
Purity:	> 97 % as determined by SDS-PAGE
Biological Activity Comment:	1. Measured by its ability to induce Interferon gamma secretion by human natural killer lymphoma NK-92 cells. The ED50 for this effect is typically 6-30 ng/mL..2. Measured by its ability to bind human IL1R1 in a functional ELISA.3. Measured by its ability to bind mouse IL1R1 in a functional ELISA.

Target Details

Target:	IL-1 beta (IL1B)
Alternative Name:	IL-1 beta/IL1B (IL1B Products)

Target Details

Background: Background: Interleukin-1 beta (IL1 beta or IL1B) also known as catabolin, is a member of the interleukin 1 cytokine family. IL1 is a pleiotropic cytokine. It is involved in the inflammatory response, cell growth, and tissue repair in the cortex. The IL1 superfamily consists of three members, IL1A (IL1 alpha), IL1B (IL1 beta), and IL1 receptor antagonist (IL1Ra). In clinical, it has been reported that Interleukin (IL)-1 may influence Th1 / Th2 immune responsiveness and has been implicated in the establishment of successful pregnancy. Proinflammatory interleukin (IL)-1 gene polymorphisms associated with high levels of IL-1beta activity increase the risk for hypochlorhydria and distal gastric carcinoma. IL1B polymorphisms may be involved in susceptibility to SSc. Moreover, the IL2-384-G allele may be a marker for the limited phenotype of systemic sclerosis (SSc).
Immune Checkpoint Immunotherapy Cancer
Immunotherapy Targeted Therapy
Synonym: Il-1b;IL-1beta

Molecular Weight: 17.5 kDa

UniProt: [P10749](#)

Pathways: [NF-kappaB Signaling](#), [Interferon-gamma Pathway](#), [TLR Signaling](#), [Negative Regulation of Hormone Secretion](#), [Cellular Response to Molecule of Bacterial Origin](#), [Carbohydrate Homeostasis](#), [Glycosaminoglycan Metabolic Process](#), [Myometrial Relaxation and Contraction](#), [Regulation of Leukocyte Mediated Immunity](#), [Positive Regulation of Immune Effector Process](#), [Autophagy](#), [Cancer Immune Checkpoints](#), [Inflammasome](#)

Application Details

Restrictions: For Research Use only

Handling

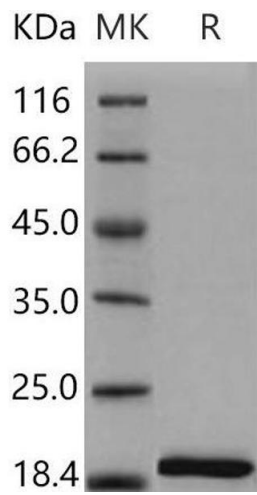
Format: Lyophilized

Reconstitution: Please refer to the printed manual for detailed information.

Buffer: Lyophilized from sterile PBS, pH 7.4

Storage: 4 °C,-20 °C,-80 °C

Storage Comment: Generally, lyophilized proteins are stable for up to 12 months when stored at -20 to -80°C. Reconstituted protein solution can be stored at 4-8°C for 2-7 days. Aliquots of reconstituted samples are stable at < -20°C for 3 months.



Western Blotting

Image 1.