

Datasheet for ABIN7320535

GPC1 Protein (His tag)

2 Images

[Go to Product page](#)

Overview

Quantity:	50 µg
Target:	GPC1
Origin:	Mouse
Source:	Human Cells
Protein Type:	Recombinant
Biological Activity:	Active
Purification tag / Conjugate:	This GPC1 protein is labelled with His tag.

Product Details

Purpose:	Recombinant Mouse Glypican-1/GPC1 Protein (His Tag)(Active)
Sequence:	Asp24-Ser529
Characteristics:	Recombinant Mouse Glypican-1 is produced by our Mammalian expression system and the target gene encoding Asp24-Ser529 is expressed with a 6His tag at the C-terminus.
Purity:	> 90 % as determined by SDS-PAGE
Endotoxin Level:	< 1.0 EU per µg as determined by the LAL method.
Biological Activity Comment:	Immobilized Human FGFb(Cat: PKSH032437) at 2µg/ml(100 µl/well) can bind Mouse GPC1-His. The ED50 of Mouse GPC1-His is 786 ng/ml .

Target Details

Target:	GPC1
---------	------

Target Details

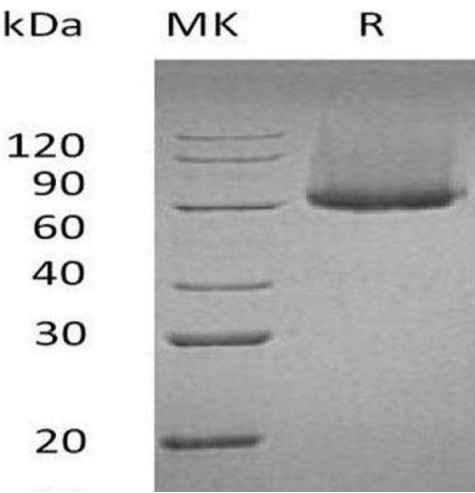
Alternative Name:	Glypican-1/GPC1 (GPC1 Products)
Background:	<p>Background: Glypican-1 is a cell membrane protein and belongs to the glypican family. The protein may act as a catalyst in increasing the rate of conversion of prion protein PRPN(C) to PRNP(Sc) via associating (via the heparan sulfate side chains) with both forms of PRPN, targeting them to lipid rafts and facilitating their interaction. It is required for proper skeletal muscle differentiation by sequestering FGF2 in lipid rafts preventing its binding to receptors (FGFRs) and inhibiting the FGF-mediated signaling.</p> <p>Synonym: Glypican-1,Gpc1</p>
Molecular Weight:	56.7 kDa
UniProt:	Q9QZF2
Pathways:	Glycosaminoglycan Metabolic Process , Regulation of Muscle Cell Differentiation

Application Details

Restrictions:	For Research Use only
---------------	-----------------------

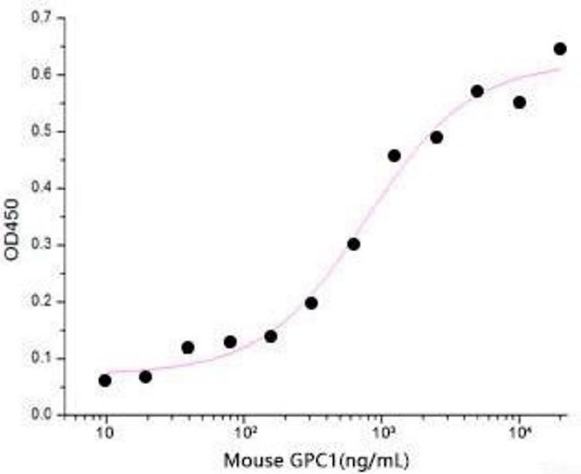
Handling

Format:	Lyophilized
Reconstitution:	Please refer to the printed manual for detailed information.
Buffer:	Lyophilized from a 0.2 µm filtered solution of PBS, pH 7.4.
Storage:	4 °C,-20 °C,-80 °C
Storage Comment:	<p>Generally, lyophilized proteins are stable for up to 12 months when stored at -20 to -80°C.</p> <p>Reconstituted protein solution can be stored at 4-8°C for 2-7 days. Aliquots of reconstituted samples are stable at < -20°C for 3 months.</p>



Western Blotting

Image 1.



ELISA

Image 2.