

Datasheet for ABIN7320537

GM-CSF Protein**2** Images[Go to Product page](#)

Overview

Quantity:	100 µg
Target:	GM-CSF (CSF2)
Origin:	Mouse
Source:	Escherichia coli (E. coli)
Protein Type:	Recombinant
Biological Activity:	Active

Product Details

Purpose:	Recombinant Mouse GM-CSF/CSF2 Protein (Active)
Sequence:	Ala18-Lys141
Characteristics:	Recombinant Mouse Granulocyte-Macrophage Colony-Stimulating Factor is produced by our E.coli expression system and the target gene encoding Ala18-Lys141 is expressed.
Purity:	> 95 % as determined by SDS-PAGE
Endotoxin Level:	< 1.0 EU per µg as determined by the LAL method.
Biological Activity Comment:	Measured in a cell proliferation assay using PDC-P1 cells The ED50 for this effect is 15-50 pg/ml.

Target Details

Target:	GM-CSF (CSF2)
Alternative Name:	GM-CSF/CSF2 (CSF2 Products)

Target Details

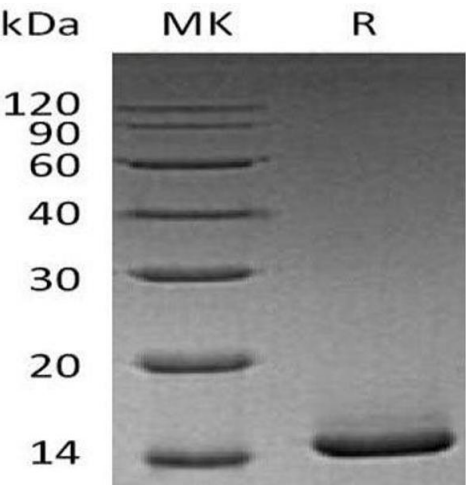
Background:	<p>Background: Granulocyte-Macrophage Colony Stimulating Factor (GM-CSF) was initially characterized as a growth factor that can support the in vitro colony formation of granulocyte-macrophage progenitors. It is produced by a number of different cell types (including activated T cells, B cells, macrophages, mast cells, endothelial cells and fibroblasts) in response to cytokine of immune and inflammatory stimuli. Besides granulocyte-macrophage progenitors, GM-CSF is also a growth factor for erythroid, megakaryocyte and eosinophil progenitors. On mature hematopoietic, monocytes/ macrophages and eosinophils. GM-CSF has a functional role on nonhematopoietic cells. It can induce human endothelial cells to migrate and proliferate. Additionally, GM-CSF can also stimulate the proliferation of a number of tumor cell lines, including osteogenic sarcoma, carcinoma and adenocarcinoma cell lines.</p> <p>Synonym: Granulocyte-macrophage colony-stimulating factor, Csf2, GM-CSF, Colony-stimulating factor, Csf gm</p>
Molecular Weight:	14.2 kDa
UniProt:	P01587
Pathways:	JAK-STAT Signaling , Cellular Response to Molecule of Bacterial Origin

Application Details

Restrictions:	For Research Use only
---------------	-----------------------

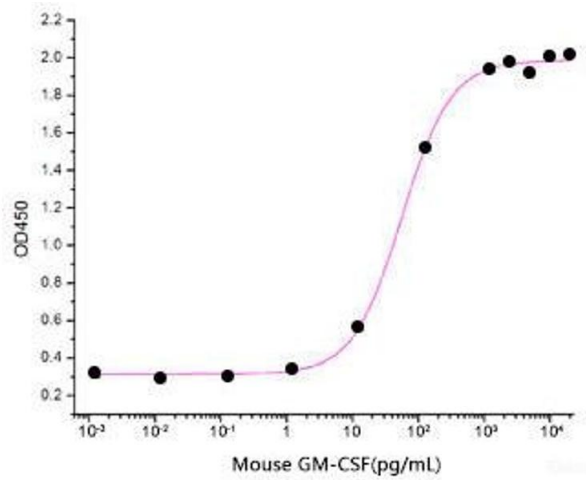
Handling

Format:	Lyophilized
Reconstitution:	Please refer to the printed manual for detailed information.
Buffer:	Lyophilized from a 0.2 µm filtered solution of 20 mM PB, 150 mM NaCl, pH 7.4.
Storage:	4 °C, -20 °C, -80 °C
Storage Comment:	<p>Generally, lyophilized proteins are stable for up to 12 months when stored at -20 to -80°C.</p> <p>Reconstituted protein solution can be stored at 4-8°C for 2-7 days. Aliquots of reconstituted samples are stable at < -20°C for 3 months.</p>



Western Blotting

Image 1.



ELISA

Image 2.