

Datasheet for ABIN7320618

M-CSF/CSF1 Protein**2** Images[Go to Product page](#)

Overview

Quantity:	50 µg
Target:	M-CSF/CSF1 (CSF1)
Origin:	Mouse
Source:	Human Cells
Protein Type:	Recombinant
Biological Activity:	Active

Product Details

Purpose:	Recombinant Mouse M-CSF/CSF1 Protein (Active)
Sequence:	Lys33-Glu262
Characteristics:	Recombinant Mouse Macrophage colony-stimulating factor 1 is produced by our Mammalian expression system and the target gene encoding Lys33-Glu262 is expressed.
Purity:	> 95 % as determined by SDS-PAGE
Endotoxin Level:	< 1.0 EU per µg as determined by the LAL method.
Biological Activity Comment:	Measured in a cell proliferation assay using M-NFS-60 mouse myelogenous leukemia lymphoblast cells. The ED50 for this effect is 0.04-0.2 ng/ml.

Target Details

Target:	M-CSF/CSF1 (CSF1)
Alternative Name:	M-CSF/CSF1 (CSF1 Products)

Target Details

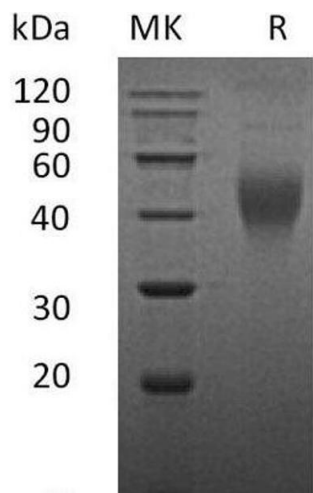
Background:	<p>Background: Macrophage colony-stimulating factor 1(M-csf)is a single-pass type I membrane protein . It is a hematopoietic growth factor that is involved in the proliferation, differentiation, and survival of monocytes, macrophages, and bone marrow progenitor cells. M-CSF affects macrophages and monocytes in several ways, including stimulating increased phagocytic and chemotactic activity, and increased tumour cell cytotoxicity. The role of M-CSF is not only restricted to the monocyte/macrophage cell lineage. By interacting with its membrane receptor, M-CSF also modulates the proliferation of earlier hematopoietic progenitors and influence numerous physiological processes involved in immunology, metabolism, fertility and pregnancy.</p> <p>Synonym: Macrophage colony-stimulating factor 1,CSF-1,MCSF,Csf1,Csfm</p>
Molecular Weight:	26.0 kDa
UniProt:	P07141
Pathways:	RTK Signaling

Application Details

Restrictions:	For Research Use only
---------------	-----------------------

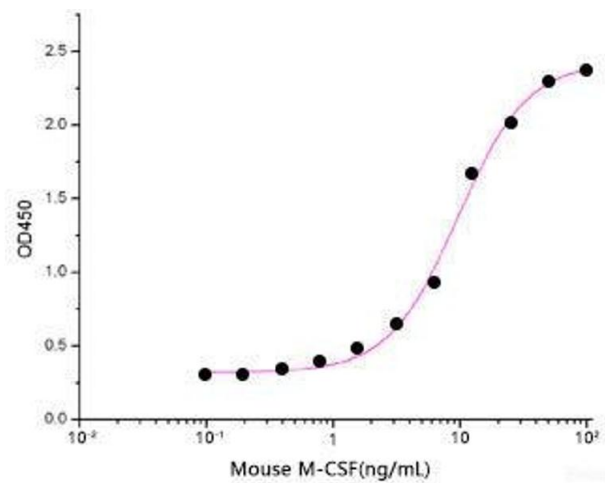
Handling

Format:	Lyophilized
Reconstitution:	Please refer to the printed manual for detailed information.
Buffer:	Lyophilized from a 0.2 µm filtered solution of 0.
Storage:	4 °C,-20 °C,-80 °C
Storage Comment:	<p>Generally, lyophilized proteins are stable for up to 12 months when stored at -20 to -80°C.</p> <p>Reconstituted protein solution can be stored at 4-8°C for 2-7 days. Aliquots of reconstituted samples are stable at < -20°C for 3 months.</p>



Western Blotting

Image 1.



ELISA

Image 2.