

Datasheet for ABIN7320628

PAI1 Protein (His tag)**1** Image[Go to Product page](#)

Overview

Quantity:	50 µg
Target:	PAI1 (SERPINE1)
Origin:	Mouse
Source:	Human Cells
Protein Type:	Recombinant
Purification tag / Conjugate:	This PAI1 protein is labelled with His tag.

Product Details

Purpose:	Recombinant Mouse Serpin E1/PAI-1 Protein (His Tag)
Sequence:	Leu24-Ser402
Characteristics:	Recombinant Mouse Plasminogen activator inhibitor is produced by our Mammalian expression system and the target gene encoding Leu24-Ser402 is expressed with a 6His tag at the C-terminus.
Purity:	> 95 % as determined by SDS-PAGE
Endotoxin Level:	< 1.0 EU per µg as determined by the LAL method.

Target Details

Target:	PAI1 (SERPINE1)
Alternative Name:	Serpin E1/PAI-1 (SERPINE1 Products)
Background:	Background: Plasminogen activator inhibitor-1 (serpin E1) is a serine protease inhibitor which belongs to the serpin family. Serpin E1 acts as 'bait' for tissue plasminogen activator, urokinase,

Target Details

protein C and matriptase-3/TMPRSS7. Its rapid interaction with PLAT may function as a major control point in the regulation of fibrinolysis.

Synonym: Plasminogen activator inhibitor 1, Endothelial plasminogen activator inhibitor, Serpin E1, Mr1, Pai1, Planh1,

Molecular Weight: 43.7 kDa

UniProt: [P22777](#)

Pathways: [p53 Signaling](#), [Cellular Response to Molecule of Bacterial Origin](#), [Carbohydrate Homeostasis](#), [Autophagy](#), [Smooth Muscle Cell Migration](#)

Application Details

Restrictions: For Research Use only

Handling

Format: Lyophilized

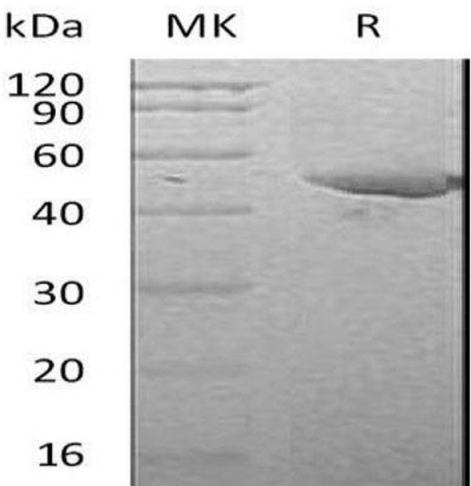
Reconstitution: Please refer to the printed manual for detailed information.

Buffer: Lyophilized from a 0.2 µm filtered solution of 20 mM PB,150 mM NaCl, pH 7.4.

Storage: 4 °C,-20 °C,-80 °C

Storage Comment: Generally, lyophilized proteins are stable for up to 12 months when stored at -20 to -80°C. Reconstituted protein solution can be stored at 4-8°C for 2-7 days. Aliquots of reconstituted samples are stable at < -20°C for 3 months.

Images



Western Blotting

Image 1.