

Datasheet for ABIN7320688

SNCA Protein[Go to Product page](#)**1** Image

Overview

Quantity:	50 µg
Target:	SNCA
Origin:	Mouse
Source:	Escherichia coli (E. coli)
Protein Type:	Recombinant

Product Details

Purpose:	Recombinant Mouse α-Synuclein/SNCA Protein
Sequence:	Met1-Ala140
Characteristics:	Recombinant Mouse alpha-Synuclein is produced by our E.coli expression system and the target gene encoding Met1-Ala140 is expressed.
Purity:	> 95 % as determined by SDS-PAGE
Endotoxin Level:	< 1.0 EU per µg as determined by the LAL method.

Target Details

Target:	SNCA
Alternative Name:	alpha-Synuclein/SNCA (SNCA Products)
Background:	Background: Alpha-Synuclein (SNCA) is a member of the Synuclein family. SNCA is expressed principally in brain but also expressed in low concentrations in all tissues except liver. SNCA interacts with UCHL1, Phospholipase D and histones. SNCA can include beta- and gamma-synuclein. In addition, SNCA is an important regulatory component of vesicular transport in

Target Details

neuronal cells. It has been suggested that SNCA is related to the pathogenesis of Parkinson's Disease and neurodegenerative disorders. Defects in SNCA will lead to Dementia Lewy Body (DLB).

Synonym: Alpha-synuclein, Non-A beta component of AD amyloid, Non-A4 component of amyloid precursor, NACP, Snca

Molecular Weight: 14.5 kDa

UniProt: [O55042](#)

Pathways: [Synaptic Membrane](#), [Regulation of G-Protein Coupled Receptor Protein Signaling](#), [Positive Regulation of Endopeptidase Activity](#), [Regulation of Carbohydrate Metabolic Process](#), [Platelet-derived growth Factor Receptor Signaling](#), [Negative Regulation of Transporter Activity](#), [Regulation of long-term Neuronal Synaptic Plasticity](#)

Application Details

Restrictions: For Research Use only

Handling

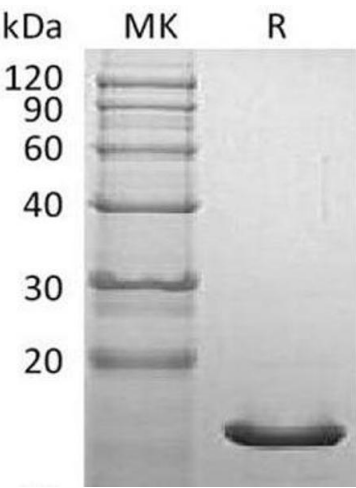
Format: Lyophilized

Reconstitution: Please refer to the printed manual for detailed information.

Buffer: Lyophilized from a 0.2 µm filtered solution of PBS, pH 7.4.

Storage: 4 °C, -20 °C, -80 °C

Storage Comment: Generally, lyophilized proteins are stable for up to 12 months when stored at -20 to -80°C. Reconstituted protein solution can be stored at 4-8°C for 2-7 days. Aliquots of reconstituted samples are stable at < -20°C for 3 months.



Western Blotting

Image 1.