

Datasheet for ABIN7320704

**Cathepsin S Protein (CTSS) (His tag)**[Go to Product page](#)**1** Image

## Overview

Quantity:	50 µg
Target:	Cathepsin S (CTSS)
Origin:	Mouse
Source:	Human Cells
Protein Type:	Recombinant
Purification tag / Conjugate:	This Cathepsin S protein is labelled with His tag.

## Product Details

Purpose:	Recombinant Mouse Cathepsin S/CTSS Protein (His Tag)
Sequence:	Val18-Ile340
Characteristics:	Recombinant Mouse Cathepsin S is produced by our Mammalian expression system and the target gene encoding Val18-Ile340 is expressed with a 6His tag at the C-terminus.
Purity:	> 95 % as determined by SDS-PAGE
Endotoxin Level:	< 1.0 EU per µg as determined by the LAL method.

## Target Details

Target:	Cathepsin S (CTSS)
Alternative Name:	Cathepsin S/CTSS ( <a href="#">CTSS Products</a> )
Background:	Background: Cathepsin S is a lysosomal enzyme that belongs to the papain family of cysteine proteases. This protein is expressed by antigen presenting cells including macrophages, B-lymphocytes, dendritic cells and microglia. Moreover, cathepsin S is expressed in some

## Target Details

epithelial cells. Compared with the abundant cathepsins B, L and H, cathepsin S shows a restricted tissue distribution, with highest levels in spleen, heart, and lung. In addition, evidences indicated that cathepsin S generates A beta from amyloidogenic fragments of beta APP in the endosomal/lysosomal compartment, and is implicated in the pathogenesis of Alzheimer's disease (AD) and Down Syndrome (DS).

Synonym: Cathepsin S, CTSS

Molecular Weight: 37.5 kDa

Pathways: [Activation of Innate immune Response](#), [Toll-Like Receptors Cascades](#)

## Application Details

Restrictions: For Research Use only

## Handling

Format: Lyophilized

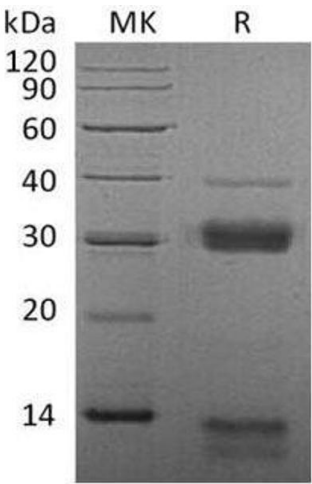
Reconstitution: Please refer to the printed manual for detailed information.

Buffer: Lyophilized from a 0.2 µm filtered solution of 20 mM PB,150 mM NaCl, pH 7.4.

Storage: 4 °C,-20 °C,-80 °C

Storage Comment: Generally, lyophilized proteins are stable for up to 12 months when stored at -20 to -80°C. Reconstituted protein solution can be stored at 4-8°C for 2-7 days. Aliquots of reconstituted samples are stable at < -20°C for 3 months.

## Images



### Western Blotting

Image 1.