

Datasheet for ABIN7320712

**Cathepsin H Protein (CTSH) (AA 22-333) (His tag)**[Go to Product page](#)**1** Image

## Overview

Quantity:	50 µg
Target:	Cathepsin H (CTSH)
Protein Characteristics:	AA 22-333
Origin:	Mouse
Source:	Human Cells
Protein Type:	Recombinant
Purification tag / Conjugate:	This Cathepsin H protein is labelled with His tag.

## Product Details

Purpose:	Recombinant Mouse Cathepsin H/CTSH Protein (aa 22-333, His Tag)
Sequence:	Glu22-Val333
Characteristics:	Recombinant Mouse Cathepsin H is produced by our Mammalian expression system and the target gene encoding Glu22-Val333 is expressed with a 6His tag at the C-terminus.
Purity:	> 95 % as determined by SDS-PAGE
Endotoxin Level:	< 1.0 EU per µg as determined by the LAL method.

## Target Details

Target:	Cathepsin H (CTSH)
Alternative Name:	Cathepsin H/CTSH ( <a href="#">CTSH Products</a> )
Background:	Background: Cathepsin H (CTSH), which can act both as an aminopeptidase and as an

## Target Details

endopeptidase, is a lysosomal cysteine protease of the papain family. CTSH is composed of a dimer of disulfide-linked heavy and light chains, both produced from a single protein precursor. CTSH is associated with various pathological conditions like human fibrous meningioma, colorectal cancer, arthritis, human prostate tumor and lung cancer. CTSH is associated with cancer progression because of their ability to degrade extracellular matrices facilitating invasion, angiogenesis and metastasis as is evident from numerous clinical reports and experimental models. The expression of CTSH is significantly increased in disease states such as in prostate tumors, sera of asthmatic patients, and mucosa of colorectal cancer patients. Synonym: Pro-cathepsin H, CTSH, ACC-4, ACC-5, aleurain, cathepsin B3, cathepsin BA, cathepsin H, CPSB, minichain, N-benzoylarginine-beta-naphthylamide hydrolase

Molecular Weight: 36.1 kDa

Pathways: [Positive Regulation of Endopeptidase Activity](#)

## Application Details

Restrictions: For Research Use only

## Handling

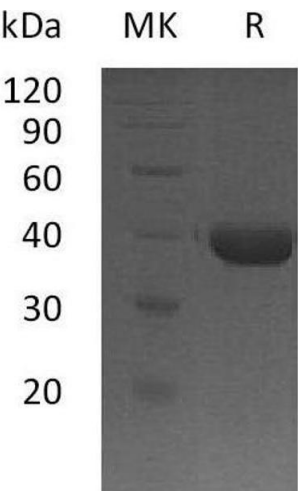
Format: Lyophilized

Reconstitution: Please refer to the printed manual for detailed information.

Buffer: Lyophilized from a 0.2 µm filtered solution of 20 mM PB, 150 mM NaCl, pH 7.4.

Storage: 4 °C, -20 °C, -80 °C

Storage Comment: Generally, lyophilized proteins are stable for up to 12 months when stored at -20 to -80°C. Reconstituted protein solution can be stored at 4-8°C for 2-7 days. Aliquots of reconstituted samples are stable at < -20°C for 3 months.



Western Blotting

Image 1.