

Datasheet for ABIN7320733

PEDF Protein[Go to Product page](#)**1** Image

Overview

Quantity:	50 µg
Target:	PEDF (SERPINF1)
Origin:	Mouse
Source:	Escherichia coli (E. coli)
Protein Type:	Recombinant

Product Details

Purpose:	Recombinant Mouse Serpin F1/PEDF Protein
Sequence:	Asp43-Thr417
Characteristics:	Recombinant Mouse Serine Protease Inhibitor-clade F1 is produced by our E.coli expression system and the target gene encoding Asp43-Thr417 is expressed.
Purity:	> 95 % as determined by SDS-PAGE
Endotoxin Level:	< 1.0 EU per µg as determined by the LAL method.

Target Details

Target:	PEDF (SERPINF1)
Alternative Name:	Serpin F1/PEDF (SERPINF1 Products)
Background:	Background: Serpin F1 is secreted Neurotrophic protein and belongs to the serpin family. Serpin F1 Highly expressed in the liver, gastric glandular mucosa and renal tubules. It is also expressed in the brain, heart, lung retina and testes. It induces extensive neuronal differentiation in retinoblastoma cells. It is potent inhibitor of angiogenesis. As it does not undergo the S

Target Details

(stressed) to R (relaxed) conformational transition characteristic of active serpins, exhibits no serine protease inhibitory activity.

Synonym: Pigment epithelium-derived factor, Pedf, Sdf3, Caspin, Serpin F1, Stromal cell-derived factor 3.

Molecular Weight: 42.0 kDa

NCBI Accession: [NP_035470](#)

Application Details

Restrictions: For Research Use only

Handling

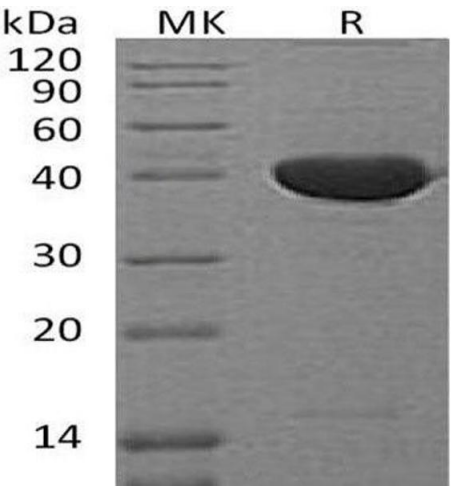
Format: Frozen, Liquid

Buffer: Supplied as a 0.2 µm filtered solution of 20 mM PB, 150 mM NaCl, pH 7.4.

Storage: -20 °C

Storage Comment: Store at < -20°C, stable for 6 months. Please minimize freeze-thaw cycles.

Images



Western Blotting

Image 1.