

Datasheet for ABIN7320749

**Cathepsin L Protein (AA 18-334) (His tag)**[Go to Product page](#)**1** Image

## Overview

Quantity:	50 µg
Target:	Cathepsin L (CTSL1)
Protein Characteristics:	AA 18-334
Origin:	Mouse
Source:	Human Cells
Protein Type:	Recombinant
Purification tag / Conjugate:	This Cathepsin L protein is labelled with His tag.

## Product Details

Purpose:	Recombinant Mouse Cathepsin L/CTSL Protein (aa 18-334, His Tag)
Sequence:	Thr18-Asn334
Characteristics:	Recombinant Mouse Cathepsin L is produced by our Mammalian expression system and the target gene encoding Thr18-Asn334 is expressed with a 6His tag at the C-terminus.
Purity:	> 95 % as determined by SDS-PAGE
Endotoxin Level:	< 1.0 EU per µg as determined by the LAL method.

## Target Details

Target:	Cathepsin L (CTSL1)
Alternative Name:	Cathepsin L/CTSL ( <a href="#">CTSL1 Products</a> )
Background:	Background: Mouse Cathepsin L is a lysosomal cysteine proteinase which is a member of the

## Target Details

peptidase C1 family. This protein is a dimer composed of disulfide-linked heavy and light chains, both produced from a single protein precursor. Cathepsin L plays a major role in intracellular protein catabolism. Its substrates include collagen and elastin, as well as alpha-1 protease inhibitor, a major controlling element of neutrophil elastase activity. Cathepsin L has been implicated in several pathologic processes, including myofibril necrosis in myopathies and in myocardial ischemia, and in the renal tubular response to proteinuria.

Synonym: Cathepsin L1, Major excreted protein, p39 cysteine proteinase, Ctsl1,1190035F06Rik

Molecular Weight: 36.8 kDa

UniProt: [P06797](#)

Pathways: [Activation of Innate immune Response](#), [Toll-Like Receptors Cascades](#)

## Application Details

Restrictions: For Research Use only

## Handling

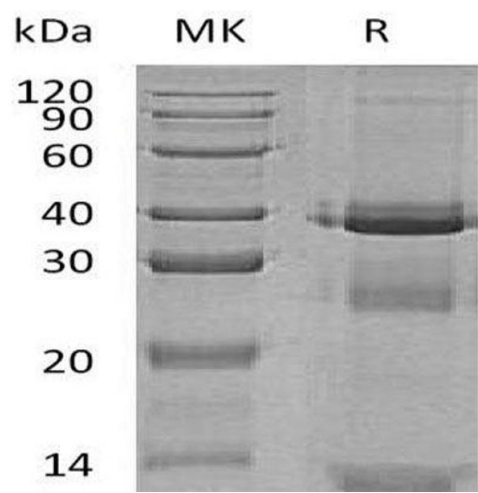
Format: Lyophilized

Reconstitution: Please refer to the printed manual for detailed information.

Buffer: Lyophilized from a 0.2 µm filtered solution of 20 mM PB,150 mM NaCl, pH 7.4.

Storage: 4 °C,-20 °C,-80 °C

Storage Comment: Generally, lyophilized proteins are stable for up to 12 months when stored at -20 to -80°C. Reconstituted protein solution can be stored at 4-8°C for 2-7 days. Aliquots of reconstituted samples are stable at < -20°C for 3 months.



Western Blotting

Image 1.