

Datasheet for ABIN7320788

Podoplanin Protein (PDPN) (Fc Tag)**1** Image[Go to Product page](#)

Overview

Quantity:	50 µg
Target:	Podoplanin (PDPN)
Origin:	Mouse
Source:	Human Cells
Protein Type:	Recombinant
Purification tag / Conjugate:	This Podoplanin protein is labelled with Fc Tag.

Product Details

Purpose:	Recombinant Mouse Podoplanin/PDPN Protein (Fc Tag)
Sequence:	Gly23-Lys133
Characteristics:	Recombinant Mouse Podoplanin is produced by our Mammalian expression system and the target gene encoding Gly23-Lys133 is expressed with a Fc tag at the C-terminus.
Purity:	> 90 % as determined by reducing SDS-PAGE.
Endotoxin Level:	< 1.0 EU per µg as determined by the LAL method.

Target Details

Target:	Podoplanin (PDPN)
Alternative Name:	Podoplanin/PDPN (PDPN Products)
Background:	Background: Podoplanin belongs to the podoplanin family, also known as Glycoprotein 38. Podoplanin is synthesized as a 172 amino acid (aa) precursor with a 22 aa signal sequence, a 119 aa extracellular domain (ECD), a 21 aa transmembrane region, and a short, 10 aa

Target Details

cytoplasmic tail. Detected at high levels in lung and brain, at lower levels in kidney, stomach, liver, spleen and esophagus, and not detected in skin and small intestine. Expressed in epithelial cells of choroid plexus, ependyma, glomerulus and alveolus, in mesothelial cells and in endothelia of lymphatic vessels. Also expressed in stromal cells of peripheral lymphoid tissue and thymic epithelial cells. Detected in carcinoma cell lines and cultured fibroblasts. Expressed at higher levels in colon carcinomas than in normal colon tissue. It can interact with CLEC1B, the interaction is independent of CLEC1B glycosylation and activates CLEC1B. It may be involved in cell migration and/or actin cytoskeleton organization. When expressed in keratinocytes, induces changes in cell morphology with transfected cells showing an elongated shape, numerous membrane protrusions, major reorganization of the actin cytoskeleton, increased motility and decreased cell adhesion. Required for normal lung cell proliferation and alveolus formation at birth. Ligand for CLEC1B, a platelet receptor. Induces platelet aggregation. Does not have any effect on folic acid or amino acid transport. Does not function as a water channel or as a regulator of aquaporin-type water channels.

Synonym: Gp38,OTS-8,RANDAM-2,T1-alpha,T1a,T1alpha,Podoplanin, Aggrus, Glycoprotein 38, PA2.26 antigen

Molecular Weight:	38.6 kDa
-------------------	----------

UniProt:	Q62011
----------	------------------------

Pathways:	Dicarboxylic Acid Transport
-----------	---

Application Details

Restrictions:	For Research Use only
---------------	-----------------------

Handling

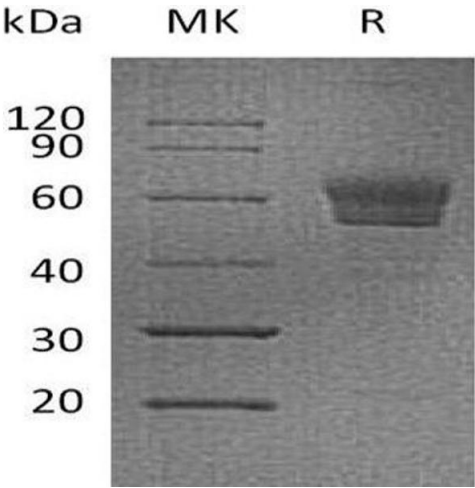
Format:	Lyophilized
---------	-------------

Reconstitution:	Please refer to the printed manual for detailed information.
-----------------	--

Buffer:	Lyophilized from a 0.2 µm filtered solution of PBS, pH 7.4.
---------	---

Storage:	4 °C,-20 °C,-80 °C
----------	--------------------

Storage Comment:	Generally, lyophilized proteins are stable for up to 12 months when stored at -20 to -80°C. Reconstituted protein solution can be stored at 4-8°C for 2-7 days. Aliquots of reconstituted samples are stable at < -20°C for 3 months.
------------------	---



Western Blotting

Image 1.