

Datasheet for ABIN7320808
KIT Ligand Protein (KITLG) (His tag)[Go to Product page](#)

1 Image

Overview

Quantity:	50 µg
Target:	KIT Ligand (KITLG)
Origin:	Mouse
Source:	Human Cells
Protein Type:	Recombinant
Purification tag / Conjugate:	This KIT Ligand protein is labelled with His tag.

Product Details

Purpose:	Recombinant Mouse SCF/c-Kit Ligand Protein (His Tag)
Sequence:	Lys26-Ala189
Characteristics:	Recombinant Mouse SCF is produced by our Mammalian expression system and the target gene encoding Lys26-Ala189 is expressed with a 6His tag at the C-terminus.
Purity:	> 95 % as determined by reducing SDS-PAGE.
Endotoxin Level:	< 1.0 EU per µg as determined by the LAL method.

Target Details

Target:	KIT Ligand (KITLG)
Alternative Name:	SCF/c-Kit Ligand (KITLG Products)
Background:	Background: SCF/C-kit ligand is the ligand of the tyrosine-kinase receptor encoded by the KIT locus. Plays an essential role in the regulation of cell survival and proliferation, hematopoiesis, stem cell maintenance, gametogenesis, mast cell development, migration and function, and in

Target Details

melanogenesis. KITLG/SCF binding can activate several signaling pathways. Promotes phosphorylation of PIK3R1, the regulatory subunit of phosphatidylinositol 3-kinase, and subsequent activation of the kinase AKT1. In phase I/II clinical studies administration of the combination of SCF and G-CSF resulted in a two- to threefold increase in cells that express the CD34 antigen compared with G-CSF alone.

Synonym: FPH2, KIT ligand, Kitl, KITLG, KL-1, Mast cell growth factor, MGF, MGFSHEP7, SCF, Stem cell factor, SFC-Kit ligand, SLF, steel factor, Hematopoietic growth factor KL

Molecular Weight: 19.3 kDa

UniProt: [P20826](#)

Pathways: [RTK Signaling](#), [Fc-epsilon Receptor Signaling Pathway](#), [EGFR Signaling Pathway](#), [Neurotrophin Signaling Pathway](#)

Application Details

Restrictions: For Research Use only

Handling

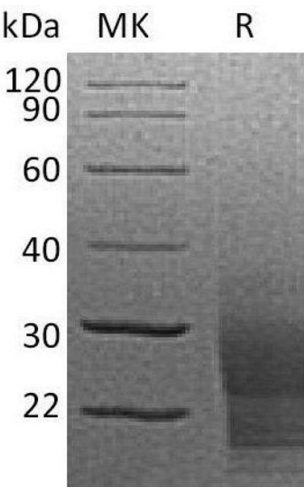
Format: Lyophilized

Reconstitution: Please refer to the printed manual for detailed information.

Buffer: Lyophilized from a 0.2 µm filtered solution of PBS, pH 7.4.

Storage: 4 °C, -20 °C, -80 °C

Storage Comment: Generally, lyophilized proteins are stable for up to 12 months when stored at -20 to -80°C. Reconstituted protein solution can be stored at 4-8°C for 2-7 days. Aliquots of reconstituted samples are stable at < -20°C for 3 months.



Western Blotting

Image 1.