

Datasheet for ABIN7320843  
**COLEC11 Protein (His tag)**[Go to Product page](#)

## 1 Image

## Overview

Quantity:	50 µg
Target:	COLEC11
Origin:	Mouse
Source:	Human Cells
Protein Type:	Recombinant
Purification tag / Conjugate:	This COLEC11 protein is labelled with His tag.

## Product Details

Purpose:	Recombinant Mouse Collectin-11/COLEC11 Protein (Human Cells, His Tag)
Sequence:	Gln27-Leu272
Characteristics:	Recombinant Mouse COLEC11 is produced by our Mammalian expression system and the target gene encoding Gln27-Leu272 is expressed with a 6His tag at the C-terminus.
Purity:	> 95 % as determined by reducing SDS-PAGE.
Endotoxin Level:	< 1.0 EU per µg as determined by the LAL method.

## Target Details

Target:	COLEC11
Alternative Name:	Collectin-11/COLEC11 ( <a href="#">COLEC11 Products</a> )
Background:	Background: Mouse Collectin Kidney Protein 1(CL-K1) is a approximately 27.1kD secreted protein and belongs to COLEC10/COLEC11 family, The collectins are a group of innate immune proteins structurally characterized by their content of a carbohydrate recognition domain and a

## Target Details

collagen-like region. Collectin-11 are highly expressed in embryonic murine craniofacial cartilage, heart, bronchi, kidney and vertebral bodies. Collectins play important roles in the innate immune system by binding to carbohydrate antigens on microorganisms, facilitating their recognition and removal.

Synonym: Collectin-11, Collectin Kidney Protein 1, CL-K1, Colec11

Molecular Weight: 27.1 kDa

## Application Details

Restrictions: For Research Use only

## Handling

Format: Lyophilized

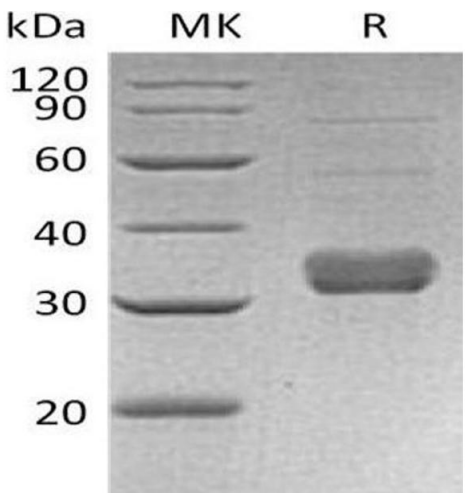
Reconstitution: Please refer to the printed manual for detailed information.

Buffer: Lyophilized from a 0.2 µm filtered solution of PBS, pH 7.4.

Storage: 4 °C, -20 °C, -80 °C

Storage Comment: Generally, lyophilized proteins are stable for up to 12 months when stored at -20 to -80°C. Reconstituted protein solution can be stored at 4-8°C for 2-7 days. Aliquots of reconstituted samples are stable at < -20°C for 3 months.

## Images



### Western Blotting

Image 1.