

Datasheet for ABIN7320855
SERPINA1 Protein (His tag)[Go to Product page](#)

1 Image

Overview

Quantity:	50 µg
Target:	SERPINA1
Origin:	Mouse
Source:	Human Cells
Protein Type:	Recombinant
Purification tag / Conjugate:	This SERPINA1 protein is labelled with His tag.

Product Details

Purpose:	Recombinant Mouse SerpinA1/A1AT Protein (His Tag)
Sequence:	Glu25-Lys413
Characteristics:	Recombinant Mouse Serpin A1 is produced by our Mammalian expression system and the target gene encoding Glu25-Lys413 is expressed with a 6His tag at the C-terminus.
Purity:	> 95 % as determined by reducing SDS-PAGE.
Endotoxin Level:	< 1.0 EU per µg as determined by the LAL method.

Target Details

Target:	SERPINA1
Alternative Name:	SerpinA1/A1AT (SERPINA1 Products)
Background:	Background: Alpha-1-antitrypsin 1-3(SERPIN A1) is a secreted protein and belongs to the serpin family. Serpins bind the protease active site resulting in a major conformational rearrangement that traps the enzyme in a covalent acyl-enzyme intermediate. Mouse SERPIN A1 is a serine

Target Details

protease inhibitor whose targets include elastase, plasmin, thrombin, trypsin, chymotrypsin, and plasminogen activator. Defects in this gene can cause emphysema or liver disease. Several transcript variants encoding the same protein have been found for this gene.

Synonym: Alpha-1-antitrypsin 1-3, Alpha-1 protease inhibitor 3, Alpha-1 protease inhibitor 6, Alpha-1-antitrypsin 1-6, Serine protease inhibitor 1-3, Serine protease inhibitor 1-6, Serine protease inhibitor A1c, Serpin A1c, Serpina1c, Dom3, Dom6, Spi1-3, Spi1-6

Molecular Weight: 44.5 kDa

UniProt: [P07758](#)

Application Details

Restrictions: For Research Use only

Handling

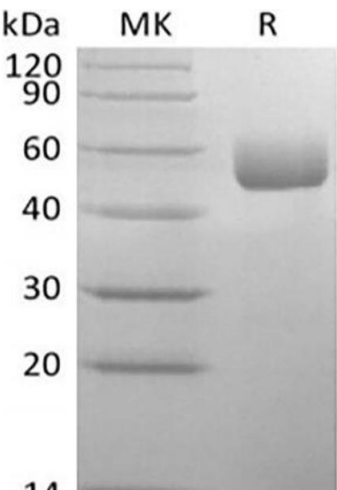
Format: Frozen, Liquid

Buffer: Supplied as a 0.2 µm filtered solution of 20 mM Tris, 150 mM NaCl, pH 8.0.

Storage: -20 °C

Storage Comment: Store at < -20°C, stable for 6 months. Please minimize freeze-thaw cycles.

Images



Western Blotting

Image 1.