

Datasheet for ABIN7320989

HIV Protein (His tag)**1** Image[Go to Product page](#)

Overview

Quantity:	50 µg
Target:	HIV
Origin:	Human Immunodeficiency Virus (HIV)
Source:	Human Cells
Protein Type:	Recombinant
Purification tag / Conjugate:	This HIV protein is labelled with His tag.

Product Details

Purpose:	Recombinant HIV Recombinant HIV gp120 Protein (His Tag)
Sequence:	Met1-Glu498
Characteristics:	Recombinant HIV 1 Envelope glycoprotein gp120 is produced by our Mammalian expression system and the target gene encoding Met1-Glu498 is expressed with a 8His tag at the C-terminus.
Purity:	> 95 % as determined by reducing SDS-PAGE.
Endotoxin Level:	< 1.0 EU per µg as determined by the LAL method.

Target Details

Target:	HIV
Alternative Name:	HIV (HIV Products)
Target Type:	Virus

Target Details

Background:	<p>Background: Envelope glycoprotein gp160 is single-pass type I membrane protein. The mature envelope protein (Env) consists of a homotrimer of non-covalently associated gp120-gp41 heterodimers. It is cleaved into the following 2 chains: glycoprotein 120 and transmembrane protein gp41. The resulting complex protrudes from the virus surface as a spike. The 17 amino acids long immunosuppressive region is present in many retroviral envelope proteins. Synthetic peptides derived from this relatively conserved sequence inhibit immune function in vitro and in vivo.</p> <p>Synonym: Envelope glycoprotein gp120, Glycoprotein 120, Surface protein gp120</p>
-------------	--

Molecular Weight:	57 kDa
-------------------	--------

UniProt:	Q9DKG6
----------	------------------------

Application Details

Restrictions:	For Research Use only
---------------	-----------------------

Handling

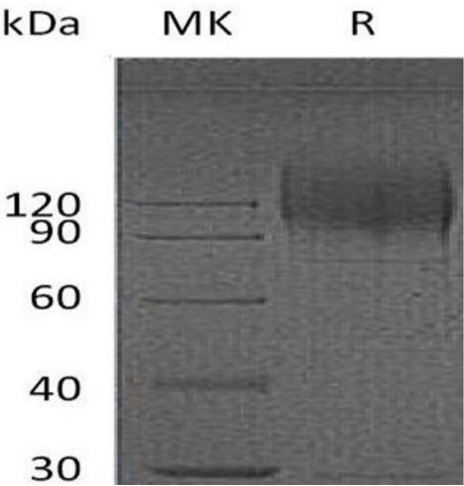
Format:	Lyophilized
---------	-------------

Reconstitution:	Please refer to the printed manual for detailed information.
-----------------	--

Buffer:	Lyophilized from a 0.2 µm filtered solution of PBS, pH 7.4.
---------	---

Storage:	4 °C, -20 °C, -80 °C
----------	----------------------

Storage Comment:	<p>Generally, lyophilized proteins are stable for up to 12 months when stored at -20 to -80°C.</p> <p>Reconstituted protein solution can be stored at 4-8°C for 2-7 days. Aliquots of reconstituted samples are stable at < -20°C for 3 months.</p>
------------------	--



Western Blotting

Image 1.