

Datasheet for ABIN7321007

CD160 Protein (CD160) (Fc Tag)[Go to Product page](#)**1** Image

Overview

Quantity:	50 µg
Target:	CD160
Origin:	Rhesus Monkey
Source:	Human Cells
Protein Type:	Recombinant
Purification tag / Conjugate:	This CD160 protein is labelled with Fc Tag.

Product Details

Purpose:	Recombinant Rhesus macaque CD160 Protein (Fc Tag)
Sequence:	Met1-Leu158
Characteristics:	Recombinant Rhesus macaque CD160 is produced by our Mammalian expression system and the target gene encoding Met1-Leu158 is expressed with a Fc tag at the C-terminus.
Purity:	> 95 % as determined by reducing SDS-PAGE.
Endotoxin Level:	< 1.0 EU per µg as determined by the LAL method.

Target Details

Target:	CD160
Alternative Name:	CD160 (CD160 Products)
Background:	Background: CD160 antigen is a cell membrane protein which contains one Ig-likeV-type (immunoglobulin-like) domain. CD160 is a GPI-anchored lymphocyte surface receptor in which expression is mostly restricted to the highly cytotoxic CD56(dim) CD16(+)peripheral blood NK

Target Details

subset. CD160 is a receptor showing broad specificity for both classical and non-classical MHC class I molecules. CD160 is expressed in spleen, peripheral blood, and small intestine. Expression of CD160 is restricted to functional NK and T cytotoxic lymphocytes. CD160 acts as a co-activator receptor for CD3-induced proliferation of CD4⁺ CD160⁺ T cells isolated from inflammatory skin lesions. Activated NK lymphocytes release a soluble form of CD160 that functionally impairs the MHC-I-specific cytotoxic CD8(+) T lymphocyte responsiveness. Synonym: CD160 antigen, CD160

Molecular Weight: 45 kDa

UniProt: [G7MG20](#)

Application Details

Comment: 55-65 kDa

Restrictions: For Research Use only

Handling

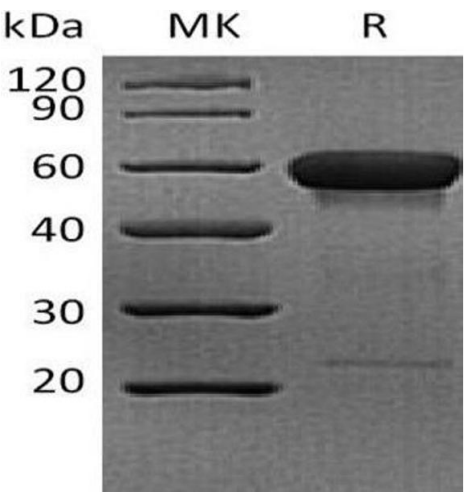
Format: Lyophilized

Reconstitution: Please refer to the printed manual for detailed information.

Buffer: Lyophilized from a 0.2 µm filtered solution of PBS, pH 7.4.

Storage: 4 °C, -20 °C, -80 °C

Storage Comment: Generally, lyophilized proteins are stable for up to 12 months when stored at -20 to -80°C. Reconstituted protein solution can be stored at 4-8°C for 2-7 days. Aliquots of reconstituted samples are stable at < -20°C for 3 months.



Western Blotting

Image 1.