

Datasheet for ABIN7321021

Prolactin Protein (PRL) (His tag)**1** Image[Go to Product page](#)

Overview

Quantity:	50 µg
Target:	Prolactin (PRL)
Origin:	Sheep
Source:	Human Cells
Protein Type:	Recombinant
Purification tag / Conjugate:	This Prolactin protein is labelled with His tag.

Product Details

Purpose:	Recombinant Sheep Prolactin/PRL (C-6His)
Sequence:	Thr31-Cys229
Characteristics:	Recombinant Sheep Prolactin is produced by our Mammalian expression system and the target gene encoding Thr31-Cys229 is expressed with a 6His tag at the C-terminus.
Purity:	>95 % as determined by reducing SDS-PAGE.
Endotoxin Level:	< 1.0 EU per µg as determined by the LAL method.

Target Details

Target:	Prolactin (PRL)
Alternative Name:	Prolactin/PRL (PRL Products)
Background:	Background: Prolactin (PRL) is a secreted neuroendocrine pituitary hormone that acts primarily on the mammary gland to promote lactation, but has pleiotropic effects in both males and females. Non-glycosylated prolactin is produced by the pituitary and packaged in storage

Target Details

granules before secretion, while glycosylated prolactin is reported to be constitutively secreted, have lower biological potency, and be removed from the circulation more quickly. Prolactin is synthesized mainly by the anterior pituitary in all mammals, where secretion is under tonic inhibition by hypothalamic dopamine. In humans, prolactin is also produced peripherally. Prolactin expression is low during early human pregnancy, but increases in late pregnancy. The prolactin receptor (PRLR) is a transmembrane type I glycoprotein that belongs to the cytokine hematopoietic receptor family. prolactin molecule is thought to bind two receptor molecules. In addition to its lactogenic activity, peripherally produced prolactin plays roles in breast and prostate cancer development, regulation of reproductive function, and immunoregulation. Synonym: Prolactin, PRL

Molecular Weight: 23.5 kDa

UniProt: [P01240](#)

Pathways: [JAK-STAT Signaling](#), [Peptide Hormone Metabolism](#), [Response to Growth Hormone Stimulus](#), [Protein targeting to Nucleus](#)

Application Details

Restrictions: For Research Use only

Handling

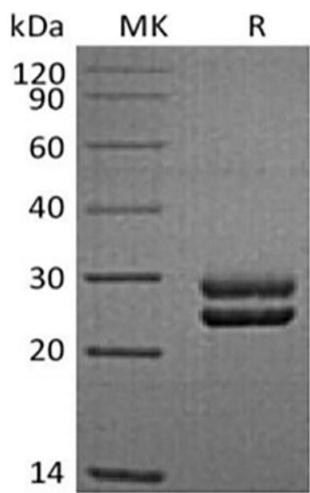
Format: Lyophilized

Reconstitution: Please refer to the printed manual for detailed information.

Buffer: Lyophilized from a 0.2 µm filtered solution of 20 mM Tris-HCl, 150 mM NaCl, pH 8.0.

Storage: 4 °C, -20 °C, -80 °C

Storage Comment: Generally, lyophilized proteins are stable for up to 12 months when stored at -20 to -80°C. Reconstituted protein solution can be stored at 4-8°C for 2-7 days. Aliquots of reconstituted samples are stable at < -20°C for 3 months.



Western Blotting

Image 1.