

Datasheet for ABIN7321036
SIGLEC15 Protein (Fc Tag)

2 Images

[Go to Product page](#)

Overview

| | |
|-------------------------------|--|
| Quantity: | 50 µg |
| Target: | SIGLEC15 |
| Origin: | Cynomolgus |
| Source: | Human Cells |
| Protein Type: | Recombinant |
| Biological Activity: | Active |
| Purification tag / Conjugate: | This SIGLEC15 protein is labelled with Fc Tag. |

Product Details

| | |
|------------------------------|---|
| Purpose: | Recombinant Cynomolgus Sialic acid-binding Ig-like lectin 15/Siglec-15/CD33L3 (C-Fc) |
| Sequence: | Phe20-Thr263 |
| Characteristics: | Recombinant Cynomolgus Sialic Acid-binding Ig-like lectin 15 is produced by our Mammalian expression system and the target gene encoding Phe20-Thr263 is expressed with a Fc tag at the C-terminus. |
| Purity: | >95 % as determined by reducing SDS-PAGE. |
| Endotoxin Level: | < 1.0 EU per µg as determined by the LAL method. |
| Biological Activity Comment: | Immobilized Cynomolgus Siglec-15-Fc(Cat#PKSQ050112) at 2µg/ml (100 µl/well) can bind Anti-Human Siglec15 mAb. The ED50 of Anti-Human Siglec15 mAb is 20.9 ng/ml. |

Target Details

| | |
|---------|----------|
| Target: | SIGLEC15 |
|---------|----------|

Target Details

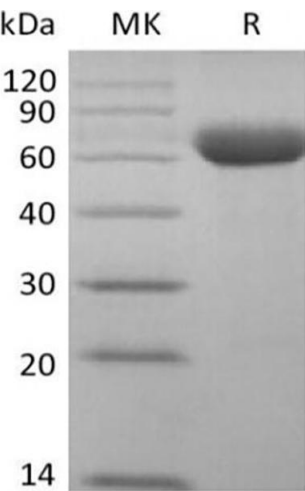
| | |
|-------------------|--|
| Alternative Name: | Sialic acid-binding Ig-like lectin 15/Siglec-15/CD33L3 (SIGLEC15 Products) |
| Background: | <p>Background: Siglec-15 is a transmembrane glycoprotein in the Siglec family. Siglecs are type I transmembrane proteins where the NH₃⁺-terminus is in the extracellular space and the COO⁻-terminus is cytosolic. Each Siglec contains an N-terminal V-type immunoglobulin domain (Ig domain) which acts as the binding receptor for sialic acid. These lectins are placed into the group of I-type lectins because the lectin domain is an immunoglobulin fold. All Siglecs are extended from the cell surface by C2-type Ig domains which have no binding activity. Siglecs differ in the number of these C2-type domains. Siglec-15 function is important for osteoclast formation and TRANCE/RANK Ligand signaling in osteoclasts.</p> <p>Synonym: Sialic acid-binding Ig-like lectin 15, Siglec-15, CD33 antigen-like 3, CD33L3</p> |
| Molecular Weight: | 53.1 kDa |
| UniProt: | A0A2K5UY47 |

Application Details

| | |
|---------------|-----------------------|
| Restrictions: | For Research Use only |
|---------------|-----------------------|

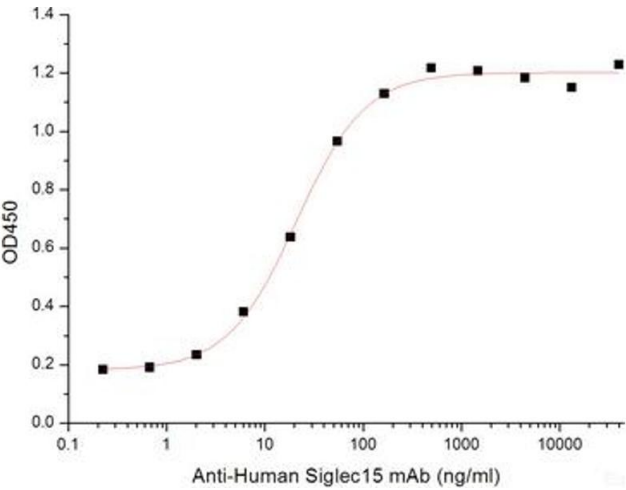
Handling

| | |
|------------------|--|
| Format: | Lyophilized |
| Reconstitution: | Please refer to the printed manual for detailed information. |
| Buffer: | Lyophilized from a 0.2 µm filtered solution of 50 mM Tris-HCl, 100 mM Glycine, 150 mM NaCl, pH 7.5. |
| Storage: | 4 °C,-20 °C,-80 °C |
| Storage Comment: | <p>Generally, lyophilized proteins are stable for up to 12 months when stored at -20 to -80°C.</p> <p>Reconstituted protein solution can be stored at 4-8°C for 2-7 days. Aliquots of reconstituted samples are stable at < -20°C for 3 months.</p> |



Western Blotting

Image 1.



ELISA

Image 2.