

Datasheet for ABIN7321044

ACE2 Protein (Fc Tag)**2** Images[Go to Product page](#)

Overview

Quantity:	50 µg
Target:	ACE2
Origin:	Rhesus Monkey
Source:	Human Cells
Protein Type:	Recombinant
Biological Activity:	Active
Purification tag / Conjugate:	This ACE2 protein is labelled with Fc Tag.

Product Details

Purpose:	Recombinant Rhesus Macaque Angiotensin-Converting Enzyme 2/ACE-2 (C-Fc)
Sequence:	Gln18-Val739
Characteristics:	Recombinant Rhesus Macaque Angiotensin-Converting Enzyme 2 is produced by our Mammalian expression system and the target gene encoding Gln18-Val739 is expressed with a Fc tag at the C-terminus.
Purity:	>95 % as determined by reducing SDS-PAGE.
Endotoxin Level:	< 1.0 EU per µg as determined by the LAL method.
Biological Activity Comment:	Immobilized 2019-nCoV S Protein RBD-SD1-mFc(Cat#PKSR030476)at 2µg/ml (100 µl/well) can bind Rhesus Macaque ACE-2-Fc(Cat#PKSQ050120). The ED50 of Recombinant Rhesus Macaque ACE-2-His(Cat#PKSQ050120)is 96 ng/ml.

Target Details

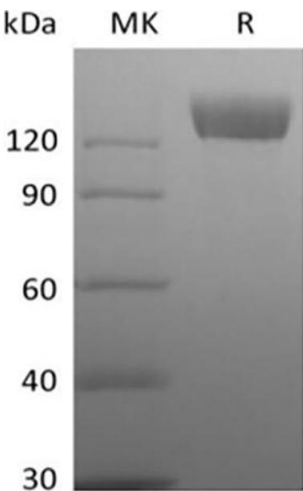
Target:	ACE2
Alternative Name:	ACE-2 (ACE2 Products)
Background:	<p>Background: Angiotensin-Converting Enzyme 2 (ACE-2) is an integral membrane protein and a zinc metalloprotease of the ACE family, the ACE family includes somatic and germinal ACE. ACE-2 cleaves angiotensins I and II as a carboxypeptidase, ACE-2 converts angiotensin I to angiotensin 1-9, and angiotensin II to angiotensin 1-7. ACE-2 is also able to hydrolyze apelin-13 and dynorphin-13 with high efficiency. ACE-2 can be high expressed in testis, kidney and heart, in colon, small intestine and ovary at moderate levels. Captopril and lisinopril as the classical ACE inhibitor don't inhibit ACE-2 activity. ACE-2 may play an important role in regulating the heart function.</p> <p>Synonym: Angiotensin-Converting Enzyme 2, ACE-Related Carboxypeptidase, Angiotensin-Converting Enzyme Homolog, ACEH, Metalloprotease MPROT15, ACE2</p>
Molecular Weight:	110.6 kDa
Pathways:	ACE Inhibitor Pathway , Peptide Hormone Metabolism , Regulation of Systemic Arterial Blood Pressure by Hormones , Feeding Behaviour

Application Details

Comment:	120-140 kDa
Restrictions:	For Research Use only

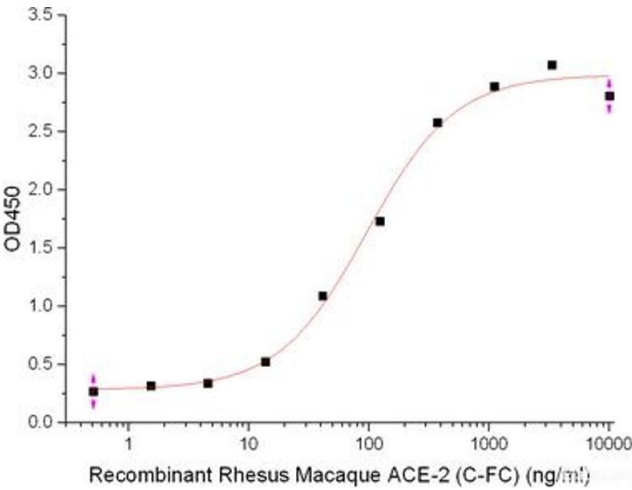
Handling

Format:	Frozen, Liquid
Buffer:	Supplied as a 0.2 µm filtered solution of PBS, pH 7.4.
Storage:	-20 °C
Storage Comment:	Store at < -20°C, stable for 6 months. Please minimize freeze-thaw cycles.



Western Blotting

Image 1.



ELISA

Image 2.