

Datasheet for ABIN7321057

## Cathepsin E Protein (CTSE) (His tag)



[Go to Product page](#)

### 1 Image

#### Overview

Quantity:	50 µg
Target:	Cathepsin E (CTSE)
Origin:	Rat
Source:	HEK-293 Cells
Protein Type:	Recombinant
Purification tag / Conjugate:	This Cathepsin E protein is labelled with His tag.

#### Product Details

Purpose:	Recombinant Rat Cathepsin E/CTSE Protein (His Tag)
Sequence:	Met1-Pro398
Characteristics:	A DNA sequence encoding the rat Ctse (AAH62002.1) (Met1-Pro398) was expressed with a polyhistidine tag at the C-terminus.
Purity:	> 90 % as determined by SDS-PAGE
Endotoxin Level:	< 1.0 EU per µg protein as determined by the LAL method.

#### Target Details

Target:	Cathepsin E (CTSE)
Alternative Name:	Cathepsin E/CTSE ( <a href="#">CTSE Products</a> )
Background:	Background: Cathepsin E Protein (CTSE Protein) is a member of the peptidase C1 family that is a gastric aspartic protease that functions as a disulfide-linked homodimer. Cathepsin E Protein (CTSE Protein) is predominantly present in the cells of immune system and is frequently

Target Details

implicated in antigen processing via the MHC classII pathway which however does not appear to be involved in the digestion of dietary protein. The protein has a specificity similar to that of pepsin and pepsin. Cathepsin E Protein (CTSE Protein) is found in highest concentration in the surface of epithelial mucus-producing cells of the stomach and also been found in more than half of the gastric cancers. It appears, therefore, to be an oncofetal antigen.

Synonym: Cathepsin E,CTSE

Molecular Weight: 42.1 kDa

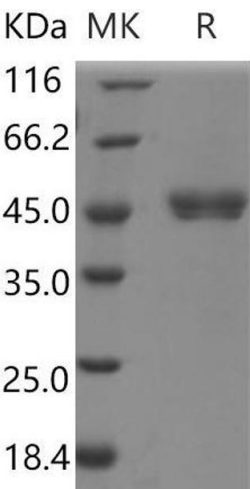
Application Details

Restrictions: For Research Use only

Handling

Format:	Lyophilized
Reconstitution:	Please refer to the printed manual for detailed information.
Buffer:	Lyophilized from sterile 12.5 mM MES, 75 mM NaCl, 50 % glycerol, pH 6.5
Storage:	4 °C,-20 °C,-80 °C
Storage Comment:	Generally, lyophilized proteins are stable for up to 12 months when stored at -20 to -80°C. Reconstituted protein solution can be stored at 4-8°C for 2-7 days. Aliquots of reconstituted samples are stable at < -20°C for 3 months.

Images



Western Blotting

Image 1.