

Datasheet for ABIN7321062

**Prolactin Family 2, Subfamily A, Member 1 (PRL2A1) protein  
(His tag)**[Go to Product page](#)**1** Image

## Overview

|                               |  |
|-------------------------------|--|
| Quantity:                     | 100 µg   |
| Target:                       | Prolactin Family 2, Subfamily A, Member 1 (PRL2A1) |
| Origin:                       | Rat  |
| Source:                       | HEK-293 Cells                                      |
| Protein Type:                 | Recombinant  |
| Purification tag / Conjugate: | His tag  |

## Product Details

|                  |  |
|------------------|--|
| Purpose:         | Recombinant Rat PRL2A1/Prolactin-2A1 Protein (His Tag)   |
| Sequence:        | Met1-Cys228  |
| Characteristics: | A DNA sequence encoding the rat Prl2a1 (NP_446243.1) (Met1-Cys228) was expressed with a polyhistidine tag at the C-terminus. |
| Purity:          | > 95 % as determined by SDS-PAGE   |
| Endotoxin Level: | < 1.0 EU per µg protein as determined by the LAL method.   |

## Target Details

|                   |  |
|-------------------|--|
| Target:           | Prolactin Family 2, Subfamily A, Member 1 (PRL2A1)       |
| Alternative Name: | PRL2A1/Prolactin-2A1 ( <a href="#">PRL2A1 Products</a> ) |
| Background:       | PrLpm  |
| Molecular Weight: | 23.8 kDa   |

Target Details

NCBI Accession: [NP\\_446243](#)

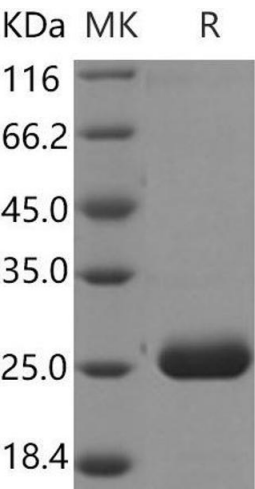
Application Details

Restrictions: For Research Use only

Handling

|                  |  |
|------------------|--|
| Format:          | Lyophilized  |
| Reconstitution:  | Please refer to the printed manual for detailed information.   |
| Buffer:          | Lyophilized from sterile PBS, pH 7.4   |
| Storage:         | 4 °C,-20 °C,-80 °C   |
| Storage Comment: | Generally, lyophilized proteins are stable for up to 12 months when stored at -20 to -80°C.<br>Reconstituted protein solution can be stored at 4-8°C for 2-7 days. Aliquots of reconstituted samples are stable at < -20°C for 3 months. |

Images



Western Blotting

Image 1.