

Datasheet for ABIN7321064

Carboxypeptidase A2 Protein (His tag)**1** Image[Go to Product page](#)

Overview

Quantity:	50 µg
Target:	Carboxypeptidase A2 (CPA2)
Origin:	Rat
Source:	HEK-293 Cells
Protein Type:	Recombinant
Purification tag / Conjugate:	This Carboxypeptidase A2 protein is labelled with His tag.

Product Details

Purpose:	Recombinant Rat Carboxypeptidase A2/CPA2 Protein (His Tag)
Sequence:	Met1-Tyr417
Characteristics:	A DNA sequence encoding the rat Cpa2 (NP_001013101.2) (Met1-Tyr417) was expressed with a polyhistidine tag at the C-terminus.
Purity:	> 90 % as determined by SDS-PAGE
Endotoxin Level:	< 1.0 EU per µg protein as determined by the LAL method.

Target Details

Target:	Carboxypeptidase A2 (CPA2)
Alternative Name:	Carboxypeptidase A2/CPA2 (CPA2 Products)
Background:	Background: Carboxypeptidase A2 (CPA2) is a secreted pancreatic procarboxy -peptidase, and cleaves the C-terminal amide or ester bond of peptides that have a free C-terminal carboxyl group. The hydrolytic action of CPA2 was identified with a preference towards long substrates

Target Details

with aromatic amino acids in their C-terminal end, particularly tryptophan. CPA2 comprises a signal peptide, a pro region and a mature chain, and can be activated after cleavage of the pro peptide. Three different forms of human pancreatic procarboxypeptidase A have been isolated, and the A1 and A2 forms are always secreted as monomeric proteins with different biochemical properties.

Synonym: Carboxypeptidase A2,CPA2

Molecular Weight: 46.5 kDa

NCBI Accession: [NP_001013101](#)

Application Details

Restrictions: For Research Use only

Handling

Format: Lyophilized

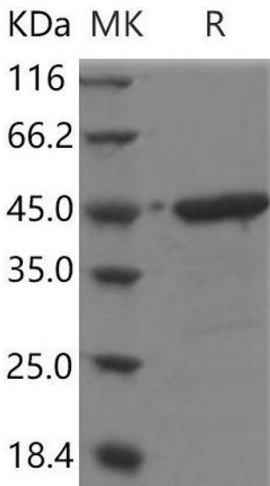
Reconstitution: Please refer to the printed manual for detailed information.

Buffer: Lyophilized from sterile PBS, pH 7.4

Storage: 4 °C,-20 °C,-80 °C

Storage Comment: Generally, lyophilized proteins are stable for up to 12 months when stored at -20 to -80°C. Reconstituted protein solution can be stored at 4-8°C for 2-7 days. Aliquots of reconstituted samples are stable at < -20°C for 3 months.

Images



Western Blotting

Image 1.