

Datasheet for ABIN7321080  
**COL4a3 Protein (Fc Tag)**[Go to Product page](#)

## 1 Image

## Overview

Quantity:	100 µg
Target:	COL4a3 (COL4A3)
Origin:	Rat
Source:	HEK-293 Cells
Protein Type:	Recombinant
Purification tag / Conjugate:	This COL4a3 protein is labelled with Fc Tag.

## Product Details

Purpose:	Recombinant Rat COL4A3 Protein (Fc Tag)
Sequence:	Gly1426-His1670
Characteristics:	A DNA sequence encoding the rat COL4A3 (NP_001129231) (Gly1426-His1670) was expressed with Fc region of human IgG1 at the N-terminus.
Purity:	> 85 % as determined by SDS-PAGE
Endotoxin Level:	< 1.0 EU per µg of the protein as determined by the LAL method

## Target Details

Target:	COL4a3 (COL4A3)
Alternative Name:	COL4A3 ( <a href="#">COL4A3 Products</a> )
Background:	Background: COL4A3 is a major structural component of basement membranes. It is composed of 3 alpha subunits, which are encoded by 6 different genes, alpha 1 through alpha 6. Each of these alpha subunits can form a triple helix structure with 2 other subunits to form

## Target Details

COL4A3. Autoantibodies bind to the collagen molecules in the basement membranes of alveoli and glomeruli can cause goodpasture syndrome. COL4A3 is also linked to an autosomal recessive form of alport syndrome. COL4A3 is organized in a head-to-head conformation and each gene pair shares a common promoter.

Synonym: COL4A3

Molecular Weight: 55.2 kDa

NCBI Accession: [NP\\_001129231](#)

Pathways: [Sensory Perception of Sound](#), [Positive Regulation of Endopeptidase Activity](#)

## Application Details

Restrictions: For Research Use only

## Handling

Format: Lyophilized

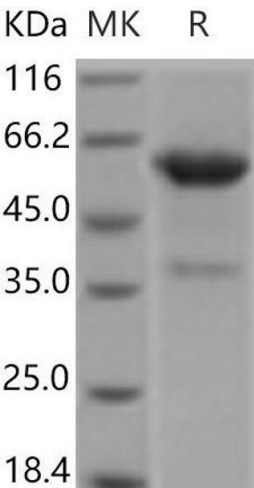
Reconstitution: Please refer to the printed manual for detailed information.

Buffer: Lyophilized from sterile PBS, pH 7.4

Storage: 4 °C, -20 °C, -80 °C

Storage Comment: Generally, lyophilized proteins are stable for up to 12 months when stored at -20 to -80°C. Reconstituted protein solution can be stored at 4-8°C for 2-7 days. Aliquots of reconstituted samples are stable at < -20°C for 3 months.

## Images



### Western Blotting

Image 1.