

Datasheet for ABIN7321086

GP1BB Protein (Fc Tag)**1** Image[Go to Product page](#)

Overview

Quantity:	100 µg
Target:	GP1BB
Origin:	Rat
Source:	HEK-293 Cells
Protein Type:	Recombinant
Purification tag / Conjugate:	This GP1BB protein is labelled with Fc Tag.

Product Details

Purpose:	Recombinant Rat GP1BB/CD42c Protein (Fc Tag)
Sequence:	Met1-Cys147
Characteristics:	A DNA sequence encoding the rat GP1BB (Q9JJM7) (Met1-Cys147) was expressed, fused with the Fc region of human IgG1 at the C-terminus.
Purity:	> 85 % as determined by SDS-PAGE
Endotoxin Level:	< 1.0 EU per µg of the protein as determined by the LAL method

Target Details

Target:	GP1BB
Alternative Name:	GP1BB/CD42c (GP1BB Products)
Background:	Background: Platelet glycoprotein Ib (GPIb) complex is best known as a major platelet receptor for von Willebrand factor essential for platelet adhesion under high shear conditions found in arteries and in thrombosis. The GPIb complex is composed of GPIb alpha (Platelet glycoprotein

Target Details

Ib alpha chain) covalently attached to GPIb beta (Platelet glycoprotein Ib beta chain) and noncovalently complexed with GPIX and GPV. GPIb-beta, also known as GP1BB, CD42b-beta and CD42c, is single-pass type I membrane protein expressed in heart and brain, which is a critical component of the von Willebrand factor (vWF) receptor. The cysteine knot region of GPIb beta in the N terminus is critical for the conformation of GPIb beta that interacts with GPIX. The precursor of GP1BB is synthesized from a 1.0 kb mRNA expressed in platelets and megakaryocytes. GPIb is a heterodimeric transmembrane protein consisting of a disulfide-linked 140 kD alpha chain and 22 kD beta chain. GPIb alpha chain provides the vWF binding site, and GPIb beta chain contributes to surface expression of the receptor and participates in transmembrane signaling through phosphorylation of its intracellular domain. GP1BB is part of the GPIb-V-IX system that constitutes the receptor for von Willebrand factor (vWF), and mediates platelet adhesion in the arterial circulation. Defects in GP1BB are a cause of Bernard-Soulier syndrome (BSS), also known as giant platelet disease (GPD). BSS patients have unusually large platelets and have a clinical bleeding tendency.

Synonym: GP1BB

Molecular Weight: 40.1 kDa

UniProt: [Q9JJM7](#)

Application Details

Restrictions: For Research Use only

Handling

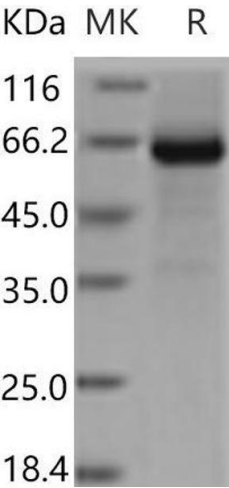
Format: Lyophilized

Reconstitution: Please refer to the printed manual for detailed information.

Buffer: Lyophilized from sterile PBS, pH 7.4

Storage: 4 °C, -20 °C, -80 °C

Storage Comment: Generally, lyophilized proteins are stable for up to 12 months when stored at -20 to -80°C. Reconstituted protein solution can be stored at 4-8°C for 2-7 days. Aliquots of reconstituted samples are stable at < -20°C for 3 months.



Western Blotting

Image 1.