

Datasheet for ABIN7321155  
**E-cadherin Protein (His tag)**[Go to Product page](#)

## 1 Image

## Overview

Quantity:	100 µg
Target:	E-cadherin (CDH1)
Origin:	Rat
Source:	HEK-293 Cells
Protein Type:	Recombinant
Purification tag / Conjugate:	This E-cadherin protein is labelled with His tag.

## Product Details

Purpose:	Recombinant Rat E-Cadherin/CDH1 Protein (His Tag)
Sequence:	Met1-Ala713
Characteristics:	A DNA sequence encoding the rat CDH1 (Q9R0T4) (Met1-Ala713) was expressed with a polyhistidine tag at the C-terminus.
Purity:	> 85 % as determined by SDS-PAGE
Endotoxin Level:	< 1.0 EU per µg of the protein as determined by the LAL method

## Target Details

Target:	E-cadherin (CDH1)
Alternative Name:	E-Cadherin/CDH1 ( <a href="#">CDH1 Products</a> )
Background:	Background: Cadherins are calcium-dependent cell adhesion proteins which preferentially interact with themselves in a homophilic manner in connecting cells, and thus may contribute to the sorting of heterogeneous cell type. E-cadherin (E-Cad), also known as CDH1 and CD324,

## Target Details

is a calcium-dependent cell adhesion molecule the intact function of which is crucial for the establishment and maintenance of epithelial tissue polarity and structural integrity. Mutations in CDH1 occur in diffuse type gastric cancer, lobular breast cancer, and endometrial cancer. In human cancers, partial or complete loss of E-cadherin expression correlates with malignancy. During apoptosis or with calcium influx, E-Cad is cleaved by the metalloproteinase to produce fragments of about 38 kDa (E-CAD/CTF1), 33 kDa (E-CAD/CTF2) and 29 kDa (E-CAD/CTF3), respectively. E-Cad has been identified as a potent invasive suppressor, as downregulation of E-cadherin expression is involved in dysfunction of the cell-cell adhesion system, and often correlates with strong invasive potential and poor prognosis of human carcinomas.

Synonym: CDH1,E-cad,CD324

Molecular Weight: 78.4 kDa

UniProt: [Q9R0T4](#)

Pathways: [WNT Signaling](#), [Sensory Perception of Sound](#), [Cell-Cell Junction Organization](#), [Tube Formation](#)

## Application Details

Restrictions: For Research Use only

## Handling

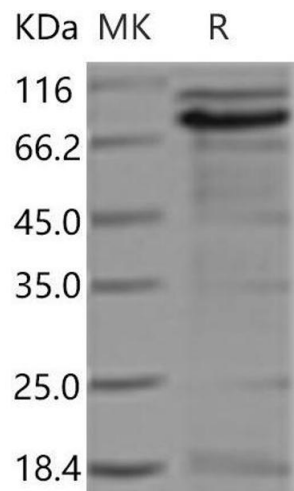
Format: Lyophilized

Reconstitution: Please refer to the printed manual for detailed information.

Buffer: Lyophilized from sterile PBS, pH 7.4

Storage: 4 °C,-20 °C,-80 °C

Storage Comment: Generally, lyophilized proteins are stable for up to 12 months when stored at -20 to -80°C. Reconstituted protein solution can be stored at 4-8°C for 2-7 days. Aliquots of reconstituted samples are stable at < -20°C for 3 months.



Western Blotting

Image 1.