

Datasheet for ABIN7321190  
**CLEC4D Protein (His tag)**[Go to Product page](#)

## 1 Image

## Overview

Quantity:	100 µg
Target:	CLEC4D
Origin:	Rat
Source:	HEK-293 Cells
Protein Type:	Recombinant
Purification tag / Conjugate:	This CLEC4D protein is labelled with His tag.

## Product Details

Purpose:	Recombinant Rat CLEC4D/CLECSF8 Protein (His Tag)
Sequence:	Trp48-Lys218
Characteristics:	A DNA sequence encoding the rat CLEC4D (Q69FH1) (Trp48-Lys218) was expressed, fused with a polyhistidine tag at the N-terminus.
Purity:	> 88 % as determined by SDS-PAGE
Endotoxin Level:	< 1.0 EU per µg of the protein as determined by the LAL method

## Target Details

Target:	CLEC4D
Alternative Name:	CLEC4D/CLECSF8 ( <a href="#">CLEC4D Products</a> )
Background:	Background: C-type lectin (CLEC) family is a type of carbohydrate-binding protein domain named lectin. C-type lectins are the most diverse and prevalent lectin family in immunity with its requirement for calcium for binding. Proteins including a C-type lectin domain have diverse

## Target Details

range of functions including cell-cell adhesion, immune response to pathogens and apoptosis.

There are at least 14 types of C-type lectins: type I to type XIV. CLEC4D (CLECSF8) is a type II membrane glycoprotein belonging to the C-type lectin family, with restricted expression in the monocyte/macrophage lineage. It plays important roles in the function of macrophages.

Synonym: CLEC4D, Clecsf8, Mcl

Molecular Weight: 22.3 kDa

UniProt: [Q69FH1](#)

## Application Details

Restrictions: For Research Use only

## Handling

Format: Lyophilized

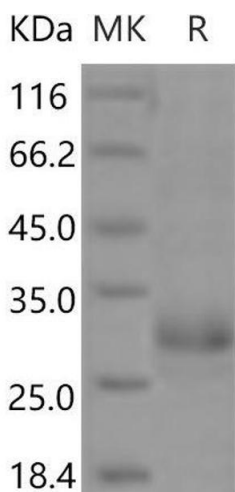
Reconstitution: Please refer to the printed manual for detailed information.

Buffer: Lyophilized from sterile PBS, pH 7.4

Storage: 4 °C, -20 °C, -80 °C

Storage Comment: Generally, lyophilized proteins are stable for up to 12 months when stored at -20 to -80°C. Reconstituted protein solution can be stored at 4-8°C for 2-7 days. Aliquots of reconstituted samples are stable at < -20°C for 3 months.

## Images



### Western Blotting

Image 1.