

Datasheet for ABIN7321191  
**CLEC4D Protein (Fc Tag)**[Go to Product page](#)

## 1 Image

## Overview

Quantity:	100 µg
Target:	CLEC4D
Origin:	Rat
Source:	HEK-293 Cells
Protein Type:	Recombinant
Purification tag / Conjugate:	This CLEC4D protein is labelled with Fc Tag.

## Product Details

Purpose:	Recombinant Rat CLEC4D/CLECSF8 Protein (Fc Tag)
Sequence:	Trp48-Lys218
Characteristics:	A DNA sequence encoding the rat CLEC4D (Q69FH1) (Trp48-Lys218) was expressed with Fc region of human IgG1 at the N-terminus.
Purity:	> 95 % as determined by SDS-PAGE
Endotoxin Level:	< 1.0 EU per µg of the protein as determined by the LAL method

## Target Details

Target:	CLEC4D
Alternative Name:	CLEC4D/CLECSF8 ( <a href="#">CLEC4D Products</a> )
Background:	Background: C-type lectin (CLEC) family is a type of carbohydrate-binding protein domain named lectin. C-type lectins are the most diverse and prevalent lectin family in immunity with its requirement for calcium for binding. Proteins including a C-type lectin domain have diverse

Target Details

range of functions including cell-cell adhesion, immune response to pathogens and apoptosis.

There are at least 14 types of C-type lectins: typeI to typeXIV. CLEC4D(CLECSF8) is a typeII membrane glycoprotein belonging to the C-type lectin family, with restricted expression in the monocyte/macrophage lineage. It plays important roles in the function of macrophages.

Synonym: CLEC4D,Clecsf8,Mcl

Molecular Weight:	48.4 kDa
UniProt:	<a href="#">Q69FH1</a>

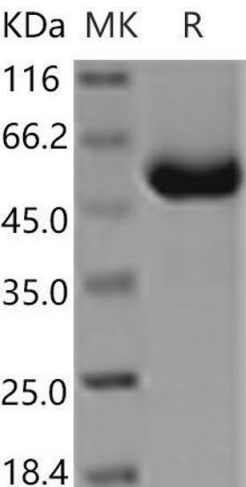
Application Details

Restrictions:	For Research Use only
---------------	-----------------------

Handling

Format:	Lyophilized
Reconstitution:	Please refer to the printed manual for detailed information.
Buffer:	Lyophilized from sterile PBS, pH 7.4
Storage:	4 °C,-20 °C,-80 °C
Storage Comment:	Generally, lyophilized proteins are stable for up to 12 months when stored at -20 to -80°C. Reconstituted protein solution can be stored at 4-8°C for 2-7 days. Aliquots of reconstituted samples are stable at < -20°C for 3 months.

Images



Western Blotting

Image 1.