

Datasheet for ABIN7321223  
**ErbB2/Her2 Protein (Fc Tag)**



[Go to Product page](#)

1 Image

## Overview

Quantity:	100 µg
Target:	ErbB2/Her2
Origin:	Rat
Source:	HEK-293 Cells
Protein Type:	Recombinant
Purification tag / Conjugate:	This ErbB2/Her2 protein is labelled with Fc Tag.

## Product Details

Purpose:	Recombinant Rat HER2/ErbB2 Protein (Fc Tag)
Sequence:	Met 4-Thr 656
Characteristics:	A DNA sequence encoding the rat ErbB2 (AAH61863.1) extracellular domain (Met 4-Thr 656) was fused with the Fc region of human IgG1 at the C-terminus.
Purity:	> 85 % as determined by SDS-PAGE
Endotoxin Level:	< 1.0 EU per µg of the protein as determined by the LAL method

## Target Details

Target:	ErbB2/Her2
Alternative Name:	HER2/ErbB2 ( <a href="#">ErbB2/Her2 Products</a> )
Background:	Background: Epidermal growth factor receptor 2 (HER2), also known as ErbB2, NEU, and CD340, is a type I membrane glycoprotein, and belongs to the epidermal growth factor (EGF) receptor family. HER2 protein cannot bind growth factors due to the lacking of ligand binding

## Target Details

domain of its own and autoinhibited constitutively. However, HER2 forms a heterodimer with other ligand-bound EGF receptor family members, therefore stabilizes ligand binding and enhances kinase-mediated activation of downstream molecules. HER2 plays a key role in development, cell proliferation and differentiation. HER2 gene has been reported to associate with malignancy and a poor prognosis in numerous carcinomas, including breast, prostate, ovarian, lung cancers and so on. Immune Checkpoint Immunotherapy Cancer Immunotherapy Targeted Therapy

Synonym: Receptor tyrosine-protein kinase erbB-2; Epidermal growth factor receptor-related protein; Proto-oncogene Neu; Proto-oncogene c-ErbB-2; p185erbB2; p185neu; CD340; ERBB2; ENV; ENVW; ERVWE1; HER-2; HER-2/neu; HER2; HERV-7q; HERV-W-ENV; HERV7Q; HERVW; HERVWENV; MLN 19; MLN19

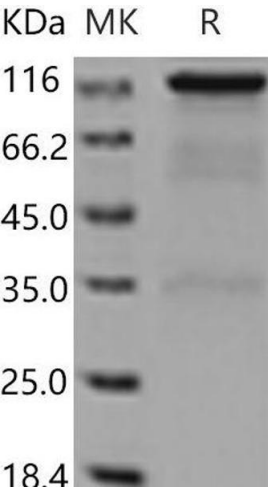
Molecular Weight:	97 kDa
Pathways:	<a href="#">RTK Signaling</a> , <a href="#">Fc-epsilon Receptor Signaling Pathway</a> , <a href="#">EGFR Signaling Pathway</a> , <a href="#">Neurotrophin Signaling Pathway</a> , <a href="#">Skeletal Muscle Fiber Development</a>

## Application Details

Restrictions:	For Research Use only
---------------	-----------------------

## Handling

Format:	Lyophilized
Reconstitution:	Please refer to the printed manual for detailed information.
Buffer:	Lyophilized from sterile PBS, pH 7.4
Storage:	4 °C, -20 °C, -80 °C
Storage Comment:	Generally, lyophilized proteins are stable for up to 12 months when stored at -20 to -80°C. Reconstituted protein solution can be stored at 4-8°C for 2-7 days. Aliquots of reconstituted samples are stable at < -20°C for 3 months.



**Western Blotting**

Image 1.