



[Go to Product page](#)

Datasheet for ABIN7321245

GPT2 Protein (His tag)

1 Image

Overview

Quantity:	100 µg
Target:	GPT2
Origin:	Rat
Source:	Baculovirus infected Insect Cells
Protein Type:	Recombinant
Purification tag / Conjugate:	This GPT2 protein is labelled with His tag.

Product Details

Purpose:	Recombinant Rat GPT2 Protein (His Tag)
Sequence:	Met 1-Ser 522
Characteristics:	A DNA sequence encoding the rat Gpt2 (NP_001012057.1) (Met 1-Ser 522) with a C-terminal polyhistidine tag was expressed.
Purity:	> 95 % as determined by SDS-PAGE
Endotoxin Level:	< 1.0 EU per µg of the protein as determined by the LAL method

Target Details

Target:	GPT2
Alternative Name:	GPT2 (GPT2 Products)
Background:	Background: Alanine aminotransferase (ALT), also known as glutamate pyruvate transaminase (Gpt), is a pyridoxal enzyme which catalyses the reversible interconversion of L-alanine and 2-oxoglutarate to pyruvate and L-glutamate, and plays a key role in the intermediary metabolism

Target Details

of glucose and amino acids. As a key enzyme for gluconeogenesis, Gpt is a widely-used serum marker for liver injury. Two ALT isoenzymes have been identified, ALT1 and ALT2 (GPT1 and GPT2), which are encoded by separate genes and share significant sequence homology, but differ in their expression patterns. Gpt1 is widely distributed and mainly expressed in intestine, liver, fat tissues, colon, muscle, and heart, in the order of high to low expression level, whereas Gpt2 expression is more restricted, mainly in liver, muscle, brain, and white adipose tissue. It has been reported that hepatic ALT2 protein is approximately four times higher in male rats than in female rats.

Synonym: ALT2,Cc2-5,Gpt2

Molecular Weight: 55 kDa

NCBI Accession: [NP_001012057](#)

Application Details

Restrictions: For Research Use only

Handling

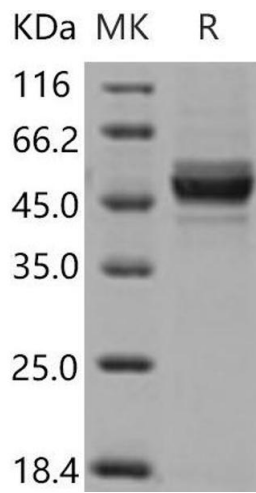
Format: Lyophilized

Reconstitution: Please refer to the printed manual for detailed information.

Buffer: Lyophilized from sterile 50 mM Tris, 100 mM NaCl, pH 8.0, 10 % glycerol, 0.5 mM TCEP

Storage: 4 °C,-20 °C,-80 °C

Storage Comment: Generally, lyophilized proteins are stable for up to 12 months when stored at -20 to -80°C. Reconstituted protein solution can be stored at 4-8°C for 2-7 days. Aliquots of reconstituted samples are stable at < -20°C for 3 months.



Western Blotting

Image 1.