



[Go to Product page](#)

Datasheet for ABIN7321250
CCL5 Protein (His tag)

1 Image

Overview

Quantity:	50 µg
Target:	CCL5
Origin:	Rat
Source:	Escherichia coli (E. coli)
Protein Type:	Recombinant
Purification tag / Conjugate:	This CCL5 protein is labelled with His tag.

Product Details

Purpose:	Recombinant Rat CCL5/RANTES Protein (His Tag)
Sequence:	Ser25-Ser92
Characteristics:	Recombinant Rat C-C motif chemokine 5 is produced by our E.coli expression system and the target gene encoding Ser25-Ser92 is expressed with a 6His tag at the N-terminus.
Purity:	> 95 % as determined by SDS-PAGE
Endotoxin Level:	<1.0 EU per µg as determined by LAL test.

Target Details

Target:	CCL5
Alternative Name:	CCL5/RANTES (CCL5 Products)
Background:	Background: C-C motif chemokine 5(CCL5) is a β-chemokine that plays a primary role in the inflammatory immune response by means of its ability to attract and activate leukocytes. CCL5 is secreted by many cell types at inflammatory sites, and it exerts a wide range of activities

Target Details

through the receptors CCR1, CCR3, CCR4, and CCR5. Inflammatory responses can be impaired by the sequestration of CCL5 by the cytomegalovirus protein US28. Oligomerization of CCL5 on glycosaminoglycans is required for CCR1 mediated leukocyte adhesion and activation as well as CCL5's interaction with the chemokine CXCL4/PF4. The deposition of CCL5 on activated vascular endothelial cells is crucial for monocyte adhesion to damaged vasculature, but CCL5 oligomerization is not required for the extravasation of adherent leukocytes. CCL5 is upregulated in breast cancer and promotes tumor progression through the attraction of proinflammatory macrophages in addition to its actions on tumor cells, stromal cells, and the vasculature.

Synonym: C-C motif chemokine 5, SIS-delta, Small-inducible cytokine A5, T-cell-specific protein RANTES, Ccl5, Scya5

Molecular Weight: 10 kDa

UniProt: [P50231](#)

Pathways: [Cellular Response to Molecule of Bacterial Origin](#), [Regulation of G-Protein Coupled Receptor Protein Signaling](#), [Smooth Muscle Cell Migration](#)

Application Details

Restrictions: For Research Use only

Handling

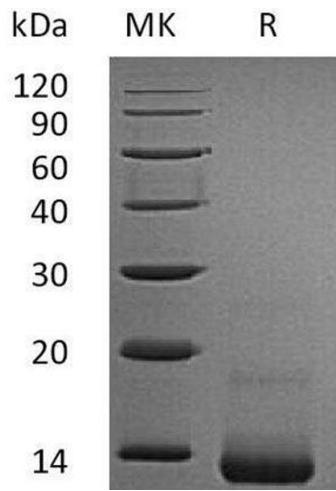
Format: Lyophilized

Reconstitution: Please refer to the printed manual for detailed information.

Buffer: Lyophilized from a 0.2 µm filtered solution of 20 mM PB, 500 mM NaCl, 2 mM EDTA, pH 7.4 .

Storage: 4 °C, -20 °C, -80 °C

Storage Comment: Generally, lyophilized proteins are stable for up to 12 months when stored at -20 to -80°C. Reconstituted protein solution can be stored at 4-8°C for 2-7 days. Aliquots of reconstituted samples are stable at < -20°C for 3 months.



Western Blotting

Image 1.