



Datasheet for ABIN732128

anti-LI Cadherin antibody (AA 101-200)



[Go to Product page](#)

3 Images

Overview

Quantity:	100 µL
Target:	LI Cadherin
Binding Specificity:	AA 101-200
Reactivity:	Human, Mouse
Host:	Rabbit
Clonality:	Polyclonal
Conjugate:	This LI Cadherin antibody is un-conjugated
Application:	Western Blotting (WB), ELISA, Immunohistochemistry (Paraffin-embedded Sections) (IHC (p))

Product Details

Immunogen:	KLH conjugated synthetic peptide derived from human LI-cadherin
Isotype:	IgG
Cross-Reactivity:	Human, Mouse
Predicted Reactivity:	Rat
Purification:	Purified by Protein A.

Target Details

Target:	LI Cadherin
Alternative Name:	LI-cadherin (LI Cadherin Products)
Background:	Synonyms: HPT1, CDH16, HPT-1, Cadherin-17, Intestinal peptide-associated transporter HPT-1,

Target Details

Liver-intestine cadherin, LI-cadherin, CDH17

Background: Cadherins are calcium-dependent cell adhesion proteins. They preferentially interact with themselves in a homophilic manner in connecting cells, cadherins may thus contribute to the sorting of heterogeneous cell types. LI-cadherin may have a role in the morphological organization of liver and intestine. Involved in intestinal peptide transport.

Gene ID: 1015

UniProt: [Q12864](#)

Application Details

Application Notes: WB 1:300-5000
ELISA 1:500-1000
IHC-P 1:200-400

Restrictions: For Research Use only

Handling

Format: Liquid

Concentration: 1 µg/µL

Buffer: 0.01M TBS(pH 7.4) with 1 % BSA, 0.02 % Proclin300 and 50 % Glycerol.

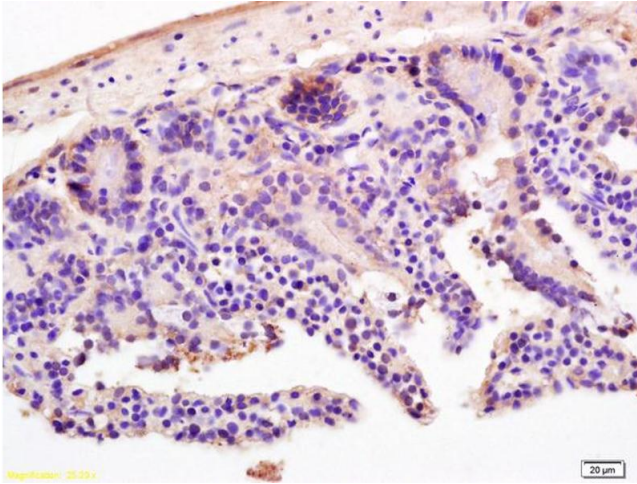
Preservative: ProClin

Precaution of Use: This product contains ProClin: a POISONOUS AND HAZARDOUS SUBSTANCE, which should be handled by trained staff only.

Storage: 4 °C,-20 °C

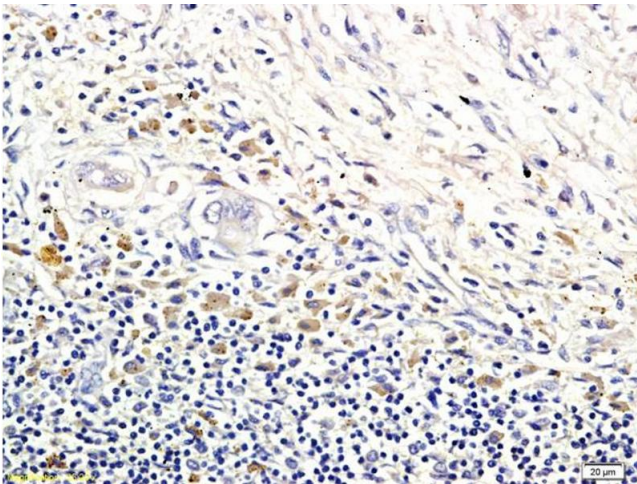
Storage Comment: Shipped at 4°C. Store at -20°C for one year. Avoid repeated freeze/thaw cycles.

Expiry Date: 12 months



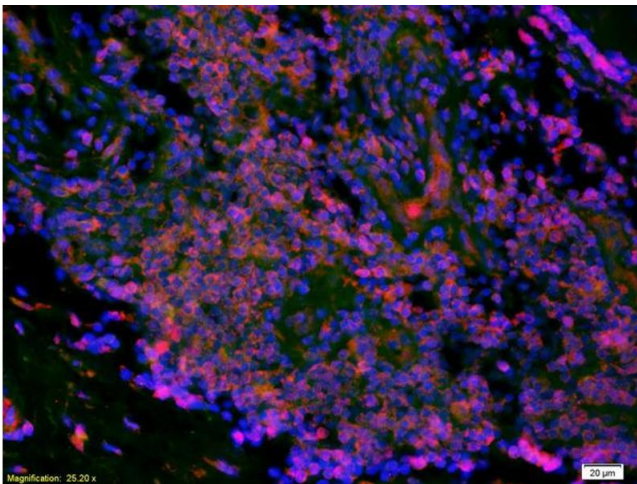
Immunohistochemistry

Image 1. Formalin-fixed and paraffin embedded mouse intestine labeled with Rabbit Anti LI-cadherin Polyclonal Antibody, Unconjugated (ABIN732128) at 1:200 followed by conjugation to the secondary antibody and DAB staining



Immunohistochemistry

Image 2. Formalin-fixed and paraffin embedded human colorectal cancer labeled with Anti-LI-cadherin Polyclonal Antibody, Unconjugated (ABIN732128) followed by conjugation to the secondary antibody and DAB staining



Immunofluorescence

Image 3. Formalin-fixed and paraffin-embedded human colon labeled with Anti-LI-cadherin Polyclonal Antibody, Unconjugated (ABIN732128) 1:200, overnight at 4°C, The secondary antibody was Goat Anti-Rabbit IgG, Cy3 conjugated used at 1:200 dilution for 40 minutes at 37°C.