

Datasheet for ABIN7321289

Kallikrein 10 Protein (KLK10) (His tag)[Go to Product page](#)**1** Image

Overview

Quantity:	100 µg
Target:	Kallikrein 10 (KLK10)
Origin:	Rat
Source:	Escherichia coli (E. coli)
Protein Type:	Recombinant
Purification tag / Conjugate:	This Kallikrein 10 protein is labelled with His tag.

Product Details

Purpose:	Recombinant Rat KLK10 Protein (His Tag)
Sequence:	Pro19-Pro259
Characteristics:	A DNA sequence encoding the Rat KLK10 (P36375-1) (Pro19-Pro259) was expressed with a polyhistidine tag at the N-terminus.
Purity:	>85 % as determined by reducing SDS-PAGE.

Target Details

Target:	Kallikrein 10 (KLK10)
Alternative Name:	KLK10 (KLK10 Products)
Background:	Background: Kallikreins are a subgroup of serine proteases having diverse physiological functions. Growing evidence suggests that many kallikreins are implicated in carcinogenesis and some have potential as novel cancer and other disease biomarkers. This gene is one of the fifteen kallikrein subfamily members located in a cluster on chromosome 19. Its encoded

Target Details

protein is secreted and may play a role in suppression of tumorigenesis in breast and prostate cancers. Alternate splicing of this gene results in multiple transcript variants encoding the same protein.

Synonym: Breast normal epithelial cell associated serine protease,Kallikrein related peptidase 10,Kallikrein10,KLK 10,KLK10,NES 1,NES1,Normal epithelial cell-specific 1,Protease serine like 1,Protease serine-like 1,PRSS L1,PRSSL 1,PRSSL1

Molecular Weight: 27.05 kDa

Pathways: [Complement System](#)

Application Details

Restrictions: For Research Use only

Handling

Format: Lyophilized

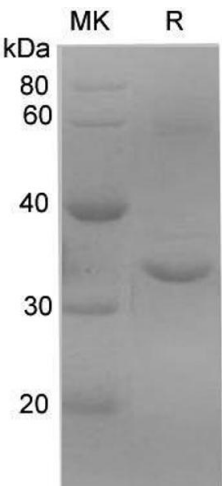
Reconstitution: Please refer to the printed manual for detailed information.

Buffer: Lyophilized from sterile PBS, pH 7.4

Storage: 4 °C,-20 °C,-80 °C

Storage Comment: Generally, lyophilized proteins are stable for up to 12 months when stored at -20 to -80°C. Reconstituted protein solution can be stored at 4-8°C for 2-7 days. Aliquots of reconstituted samples are stable at < -20°C for 3 months.

Images



Western Blotting

Image 1.