



[Go to Product page](#)

Datasheet for ABIN732698

anti-CCL21 antibody (AA 24-134)

2 Images

1 Publication

Overview

Quantity:	100 µL
Target:	CCL21
Binding Specificity:	AA 24-134
Reactivity:	Mouse, Rat
Host:	Rabbit
Clonality:	Polyclonal
Conjugate:	This CCL21 antibody is un-conjugated
Application:	Western Blotting (WB), ELISA, Immunofluorescence (Paraffin-embedded Sections) (IF (p)), Immunohistochemistry (Paraffin-embedded Sections) (IHC (p))

Product Details

Immunogen:	KLH conjugated synthetic peptide derived from human CCL21
Isotype:	IgG
Cross-Reactivity:	Mouse, Rat
Predicted Reactivity:	Human,Dog,Pig,Horse,Rabbit
Purification:	Purified by Protein A.

Target Details

Target:	CCL21
Alternative Name:	CCL21/6Ckine (CCL21 Products)

Target Details

Background:	Synonyms: ECL, SLC, CKb9, TCA4, 6Ckine, SCYA21, C-C motif chemokine 21, Beta-chemokine exodus-2, Secondary lymphoid-tissue chemokine, Small-inducible cytokine A21, CCL21, UNQ784/PRO1600 Background: Inhibits hemopoiesis and stimulates chemotaxis. Chemotactic in vitro for thymocytes and activated T-cells, but not for B-cells, macrophages, or neutrophils. Shows preferential activity towards naive T-cells. May play a role in mediating homing of lymphocytes to secondary lymphoid organs. Binds to atypical chemokine receptor ACKR4 and mediates the recruitment of beta-arrestin (ARRB1/2) to ACKR4.
Gene ID:	6366
UniProt:	O00585
Pathways:	Regulation of Actin Filament Polymerization

Application Details

Application Notes:	WB 1:300-5000 ELISA 1:500-1000 IHC-P 1:200-400
Restrictions:	For Research Use only

Handling

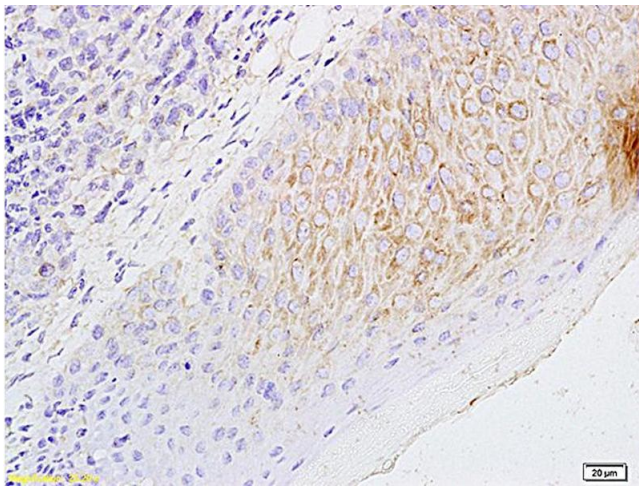
Format:	Liquid
Concentration:	1 µg/µL
Buffer:	0.01M TBS(pH 7.4) with 1 % BSA, 0.02 % Proclin300 and 50 % Glycerol.
Preservative:	ProClin
Precaution of Use:	This product contains ProClin: a POISONOUS AND HAZARDOUS SUBSTANCE, which should be handled by trained staff only.
Storage:	4 °C,-20 °C
Storage Comment:	Shipped at 4°C. Store at -20°C for one year. Avoid repeated freeze/thaw cycles.
Expiry Date:	12 months

Publications

Product cited in: Borrelli, Abrão, Taube, Darb-Esfahani, Köhler, Kaufmann, Chiantera, Mechsner: "

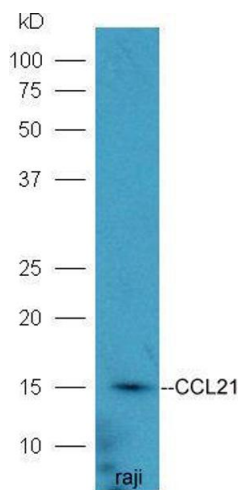
Immunohistochemical Investigation of Metastasis-Related Chemokines in Deep-Infiltrating Endometriosis and Compromised Pelvic Sentinel Lymph Nodes." in: **Reproductive sciences (Thousand Oaks, Calif.)**, (2015) ([PubMed](#)).

Images



Immunohistochemistry

Image 1. Formalin-fixed and paraffin embedded mouse foot tumor labeled with Anti-CCL21/6CKINE Polyclonal Antibody, Unconjugated (ABIN732698) followed by conjugation to the secondary antibody and DAB staining



Western Blotting

Image 2. Raji lysates probed with Rabbit Anti-CCL21/6CKine Polyclonal Antibody at 1:5000 90min in 37°C