

Datasheet for ABIN732728

anti-XBP1 antibody (AA 51-150)**3** Images**1** Publication[Go to Product page](#)

Overview

Quantity:	100 µL
Target:	XBP1
Binding Specificity:	AA 51-150
Reactivity:	Human, Mouse
Host:	Rabbit
Clonality:	Polyclonal
Conjugate:	This XBP1 antibody is un-conjugated
Application:	Western Blotting (WB), ELISA, Flow Cytometry (FACS), Immunohistochemistry (Paraffin-embedded Sections) (IHC (p)), Immunofluorescence (Cultured Cells) (IF (cc)), Immunofluorescence (Paraffin-embedded Sections) (IF (p)), Immunohistochemistry (Frozen Sections) (IHC (fro))

Product Details

Immunogen:	KLH conjugated synthetic peptide derived from human XBP-1
Isotype:	IgG
Specificity:	XBP-1 antibody will recognize both isoforms, may also interact with chicken
Cross-Reactivity:	Human, Mouse
Predicted Reactivity:	Rat,Cow,Chicken
Purification:	Purified by Protein A.

Target Details

Target:	XBP1
Alternative Name:	XBP1 (XBP1 Products)
Background:	<p>Synonyms: XBP2, TREB5, XBP-1, X-box-binding protein 1, Tax-responsive element-binding protein 5, XBP1</p> <p>Background: Transcription factor essential for hepatocyte growth, the differentiation of plasma cells, the immunoglobulin secretion, and the unfolded protein response (UPR). Acts during endoplasmic reticulum stress (ER) by activating unfolded protein response (UPR) target genes via direct binding to the UPR element (UPRE). Binds DNA preferably to the CRE-like element 5'-GATGACGTG[TG]N(3)[AT]T-3', and also to some TPA response elements (TRE). Binds to the HLA DR-alpha promoter. Binds to the Tax-responsive element (TRE) of HTLV-I.</p>
Gene ID:	7494
UniProt:	P17861
Pathways:	ER-Nucleus Signaling , Unfolded Protein Response

Application Details

Application Notes:	WB 1:300-5000 ELISA 1:500-1000 FCM 1:20-100 IHC-P 1:200-400 IHC-F 1:100-500 IF(IHC-P) 1:50-200 IF(IHC-F) 1:50-200 IF(ICC) 1:50-200
Restrictions:	For Research Use only

Handling

Format:	Liquid
Concentration:	1 µg/µL
Buffer:	0.01M TBS(pH 7.4) with 1 % BSA, 0.02 % Proclin300 and 50 % Glycerol.
Preservative:	ProClin
Precaution of Use:	This product contains ProClin: a POISONOUS AND HAZARDOUS SUBSTANCE, which should be

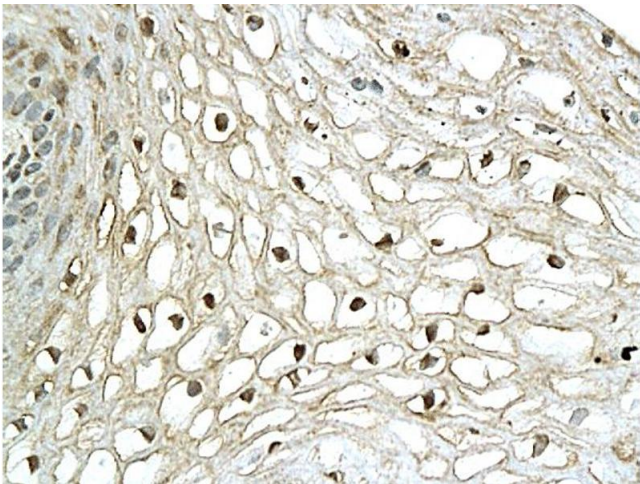
Handling

	handled by trained staff only.
Storage:	4 °C,-20 °C
Storage Comment:	Shipped at 4°C. Store at -20°C for one year. Avoid repeated freeze/thaw cycles.
Expiry Date:	12 months

Publications

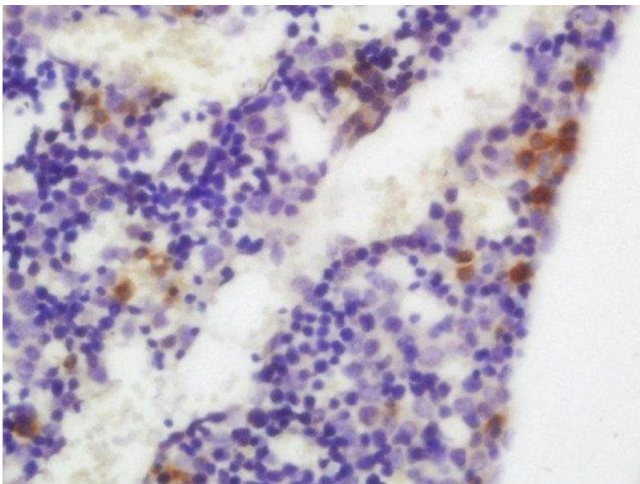
Product cited in:	Li, Han, Shi: "IRE1?-XBP1 Pathway Is Activated Upon Induction of Single-Prolonged Stress in Rat Neurons of the Medial Prefrontal Cortex." in: Journal of molecular neuroscience : MN , (2015) (PubMed).
-------------------	----------------------------------------------------------------------------------------------------------------------------------------------------------------------------------------------------------------------------------

Images



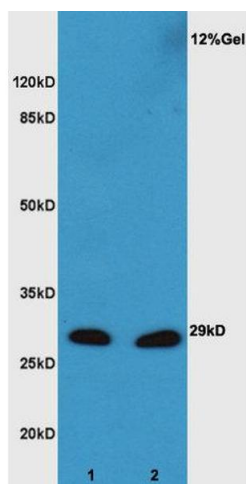
Immunohistochemistry

Image 1. Formalin-fixed and paraffin embedded human cervical tissue labeled with Anti-XBP-1 Polyclonal Antibody, Unconjugated (ABIN732728) followed by conjugation to the secondary antibody and DAB staining



Immunohistochemistry (Paraffin-embedded Sections)

Image 2. Formalin-fixed and paraffin embedded mouse embryo labeled with Anti-XBP1 Polyclonal Antibody, Unconjugated at 1:200 followed by conjugation to the secondary antibody and DAB staining



Western Blotting

Image 3. L1 mouse embryo lysate L2 mouse liver lysates probed with Anti XBP1 Polyclonal Antibody, Unconjugated at 1:3000 for 90 min at 37°C. Predicted band 29kD. Observed band size: 29kD