

Datasheet for ABIN732758

anti-Cathepsin H antibody (AA 71-170)

5 Images

[Go to Product page](#)

Overview

Quantity:	100 µL
Target:	Cathepsin H (CTSH)
Binding Specificity:	AA 71-170
Reactivity:	Human, Mouse
Host:	Rabbit
Clonality:	Polyclonal
Conjugate:	This Cathepsin H antibody is un-conjugated
Application:	Western Blotting (WB), ELISA, Immunohistochemistry (Paraffin-embedded Sections) (IHC (p)), Immunofluorescence (Cultured Cells) (IF (cc)), Immunofluorescence (Paraffin-embedded Sections) (IF (p)), Immunohistochemistry (Frozen Sections) (IHC (fro))

Product Details

Immunogen:	KLH conjugated synthetic peptide derived from human Capsin H
Isotype:	IgG
Specificity:	Belongs to the peptidase C1 family
Cross-Reactivity:	Human, Mouse
Predicted Reactivity:	Rat,Dog,Cow,Pig,Horse,Rabbit
Purification:	Purified by Protein A.

Target Details

Target:	Cathepsin H (CTSH)
Alternative Name:	Cathepsin H/CTSH (CTSH Products)
Background:	<p>Synonyms: CPSB, ACC-4, ACC-5, minichain, Pro-cathepsin H, CTSH</p> <p>Background: The cathepsin family of proteolytic enzymes contains several diverse classes of proteases. The cysteine protease class comprises cathepsins B, L, H, K, S, and O. The aspartyl protease class is composed of cathepsins D and E. Cathepsin G is in the serine protease class. Most cathepsins are lysosomal and each is involved in various cellular events such as peptide biosynthesis and protein degradation. The propeptide region of cathepsin H is highly homologous to other cathepsins. This region is thought to play a role in the processing of cysteine proteases. Cathepsin H is thought to be involved in several pathological conditions, including neuro degenerative disorders and cancer.</p>
Gene ID:	1512
UniProt:	P09668
Pathways:	Positive Regulation of Endopeptidase Activity

Application Details

Application Notes:	WB 1:300-5000 ELISA 1:500-1000 IHC-P 1:200-400 IHC-F 1:100-500 IF(IHC-P) 1:50-200 IF(IHC-F) 1:50-200 IF(ICC) 1:50-200
Restrictions:	For Research Use only

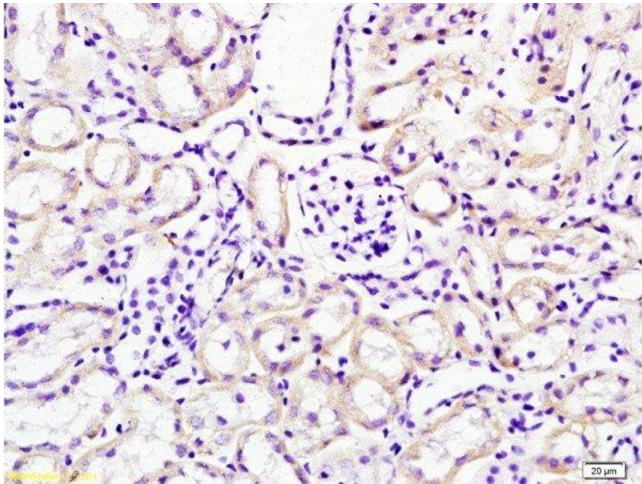
Handling

Format:	Liquid
Concentration:	1 µg/µL
Buffer:	0.01M TBS(pH 7.4) with 1 % BSA, 0.02 % Proclin300 and 50 % Glycerol.
Preservative:	ProClin
Precaution of Use:	This product contains ProClin: a POISONOUS AND HAZARDOUS SUBSTANCE, which should be

Handling

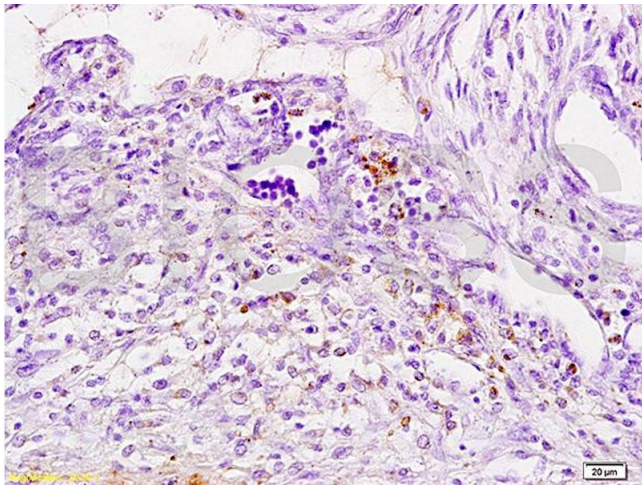
	handled by trained staff only.
Storage:	4 °C,-20 °C
Storage Comment:	Shipped at 4°C. Store at -20°C for one year. Avoid repeated freeze/thaw cycles.
Expiry Date:	12 months

Images



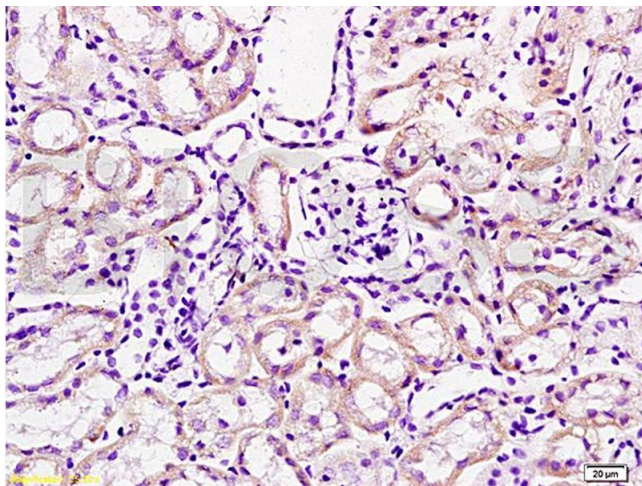
Immunohistochemistry (Paraffin-embedded Sections)

Image 1. Formalin-fixed and paraffin embedded mouse kidney tissue labeled with Anti-Cathepsin H Polyclonal Antibody, Unconjugated at 1:200 followed by conjugation to the secondary antibody, (SP-0023), and DAB staining



Immunohistochemistry

Image 2. Formalin-fixed and paraffin embedded human breast carcinoma tissue labeled with Anti-Cathepsin H Polyclonal Antibody, Unconjugated (ABIN732758) at 1:200 followed by conjugation to the secondary antibody, (SP-0023), and DAB staining



Immunohistochemistry

Image 3. Formalin-fixed and paraffin embedded mouse kidney tissue labeled with Anti-Cathepsin H Polyclonal Antibody, Unconjugated (ABIN732758) at 1:200 followed by conjugation to the secondary antibody, (SP-0023), and DAB staining

Please check the [product details page](#) for more images. Overall 5 images are available for ABIN732758.