



[Go to Product page](#)

Datasheet for ABIN7328345

anti-PTEN antibody (acLys402)

2 Images

Overview

Quantity:	50 µg
Target:	PTEN
Binding Specificity:	acLys402
Reactivity:	Human
Host:	Rabbit
Clonality:	Polyclonal
Conjugate:	This PTEN antibody is un-conjugated
Application:	Western Blotting (WB), ELISA

Product Details

Immunogen:	Synthesized peptide derived from the Human PTEN around the acetylation site of K402.
Isotype:	IgG
Cross-Reactivity:	Human, Mouse, Rat
Purification:	The antibody was affinity-purified from rabbit antiserum by affinity-chromatography using epitope-specific immunogen.

Target Details

Target:	PTEN
Alternative Name:	PTEN (PTEN Products)
Background:	10q23del antibody, BZS antibody, DEC antibody, GLM2 antibody, MGC11227 antibody, MHAM

Target Details

antibody, MMAC1 antibody, MMAC1 phosphatase and tensin homolog deleted on chromosome 10 antibody, Mutated in multiple advanced cancers 1 antibody, Phosphatase and tensin homolog antibody, Phosphatase and tensin like protein antibody, Phosphatidylinositol 3,4,5-trisphosphate 3-phosphatase and dual-specificity protein phosphatase PTEN antibody, Pten antibody, PTEN_HUMAN antibody, PTEN1 antibody, TEP1 antibody

UniProt: [P60484](#)

Pathways: [TCR Signaling](#), [Fc-epsilon Receptor Signaling Pathway](#), [EGFR Signaling Pathway](#), [Inositol Metabolic Process](#), [Synaptic Membrane](#), [Regulation of Cell Size](#), [Autophagy](#), [Platelet-derived growth Factor Receptor Signaling](#), [Signaling of Hepatocyte Growth Factor Receptor](#), [BCR Signaling](#)

Application Details

Application Notes: WB:1:500-1:2000, ELISA:1:20000,

Restrictions: For Research Use only

Handling

Format: Liquid

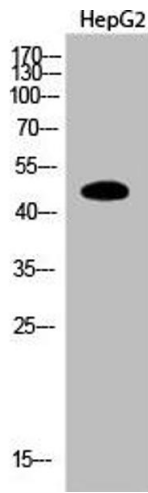
Buffer: Liquid in PBS containing 50 % glycerol, 0.5 % BSA and 0.02 % sodium azide.

Preservative: Sodium azide

Precaution of Use: This product contains Sodium azide: a POISONOUS AND HAZARDOUS SUBSTANCE which should be handled by trained staff only.

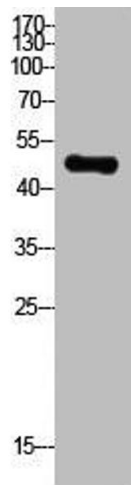
Storage: -20 °C,-80 °C

Storage Comment: Upon receipt, store at -20°C or -80°C. Avoid repeated freeze.



Western Blotting

Image 1. Western Blot analysis of HepG2 cells using Acetyl-PTEN (K402) Polyclonal Antibody



Western Blotting

Image 2. Western Blot analysis of HepG2 cells using Acetyl-PTEN (K402) Polyclonal Antibody