



[Go to Product page](#)

Datasheet for ABIN7328483

anti-ABCG2 antibody (Internal Region)

2 Images

Overview

Quantity:	50 µg
Target:	ABCG2
Binding Specificity:	Internal Region
Reactivity:	Human
Host:	Rabbit
Clonality:	Polyclonal
Conjugate:	This ABCG2 antibody is un-conjugated
Application:	Western Blotting (WB), Immunohistochemistry (IHC), ELISA

Product Details

Immunogen:	Synthesized peptide derived from the Internal region of Human ABCG2.
Isotype:	IgG
Cross-Reactivity:	Human
Purification:	The antibody was affinity-purified from rabbit antiserum by affinity-chromatography using epitope-specific immunogen.

Target Details

Target:	ABCG2
Alternative Name:	ABCG2 (ABCG2 Products)
Background:	ABC transporter antibody, ABC15 antibody, ABCG 2 antibody, ABCG2 antibody, ABCG2_HUMAN

Target Details

antibody, ABCP antibody, ATP binding cassette sub family G (WHITE) member 2 antibody, ATP binding cassette transporter G2 antibody, ATP-binding cassette sub-family G member 2 antibody, BCRP antibody, BCRP1 antibody, BMDP antibody, Breast cancer resistance protein antibody, CD338 antibody, CDw338 antibody, CDw338 antigen antibody, EST157481 antibody, GOUT1 antibody, MGC102821 antibody, Mitoxantrone resistance associated protein antibody, Mitoxantrone resistance-associated protein antibody, MRX antibody, Multi drug resistance efflux transport ATP binding cassette sub family G (WHITE) member 2 antibody, MXR antibody, MXR1 antibody, Placenta specific ATP binding cassette transporter antibody, Placenta specific MDR protein antibody, Placenta-specific ATP-binding cassette transporter antibody, UAQTL1 antibody

UniProt: [Q9UNQ0](#)

Pathways: [Transition Metal Ion Homeostasis](#)

Application Details

Application Notes: WB:1:500-1:2000, IHC:1:100-1:300, ELISA:1:10000,

Restrictions: For Research Use only

Handling

Format: Liquid

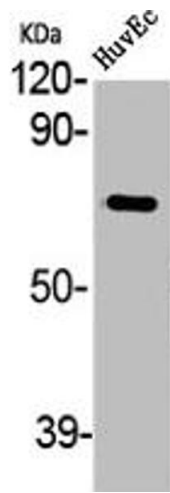
Buffer: Liquid in PBS containing 50 % glycerol, 0.5 % BSA and 0.02 % sodium azide.

Preservative: Sodium azide

Precaution of Use: This product contains Sodium azide: a POISONOUS AND HAZARDOUS SUBSTANCE which should be handled by trained staff only.

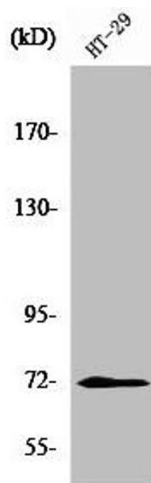
Storage: -20 °C,-80 °C

Storage Comment: Upon receipt, store at -20°C or -80°C. Avoid repeated freeze.



Western Blotting

Image 1. Western Blot analysis of HuvEc cells using ABCG2 Polyclonal Antibody



Western Blotting

Image 2. Western Blot analysis of HT29 cells using ABCG2 Polyclonal Antibody