

Datasheet for ABIN733313  
**anti-CCR10 antibody (AA 1-52)**

## 3 Images

[Go to Product page](#)

## Overview

Quantity:	100 µL
Target:	CCR10
Binding Specificity:	AA 1-52
Reactivity:	Human, Mouse, Rat
Host:	Rabbit
Clonality:	Polyclonal
Conjugate:	This CCR10 antibody is un-conjugated
Application:	Western Blotting (WB), ELISA, Flow Cytometry (FACS), Immunohistochemistry (Paraffin-embedded Sections) (IHC (p)), Immunohistochemistry (Frozen Sections) (IHC (fro)), Immunofluorescence (Paraffin-embedded Sections) (IF (p)), Immunofluorescence (Cultured Cells) (IF (cc))

## Product Details

Immunogen:	KLH conjugated synthetic peptide derived from human CCR-10
Isotype:	IgG
Cross-Reactivity:	Human, Mouse, Rat
Predicted Reactivity:	Dog,Cow,Pig,Rabbit
Purification:	Purified by Protein A.

## Target Details

Target:	CCR10
---------	-------

## Target Details

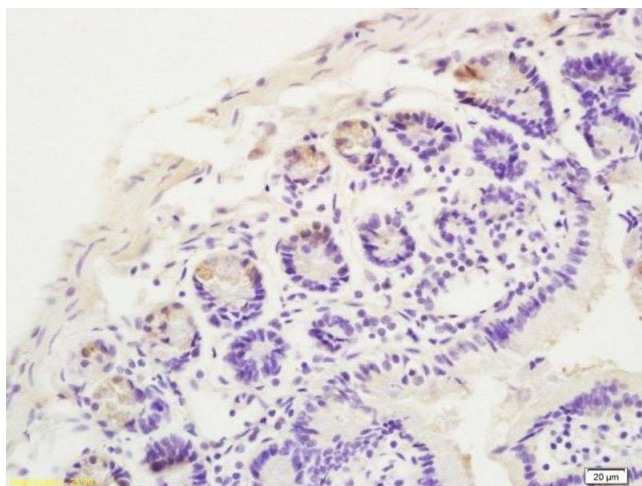
Alternative Name:	CCR10 ( <a href="#">CCR10 Products</a> )
Background:	<p>Synonyms: GPR2, C-C chemokine receptor type 10, C-C CKR-10, CC-CKR-10, CCR-10, G-protein coupled receptor 2, CCR10</p> <p>Background: Receptor for chemokines SCYA27 and SCYA28. Subsequently transduces a signal by increasing the intracellular calcium ions level and stimulates chemotaxis in a pre-B cell line.</p>
Gene ID:	2826
UniProt:	<a href="#">P46092</a>

## Application Details

Application Notes:	<p>WB 1:300-5000</p> <p>ELISA 1:500-1000</p> <p>FCM 1:20-100</p> <p>IHC-P 1:200-400</p> <p>IHC-F 1:100-500</p> <p>IF(IHC-P) 1:50-200</p> <p>IF(IHC-F) 1:50-200</p> <p>IF(ICC) 1:50-200</p>
Restrictions:	For Research Use only

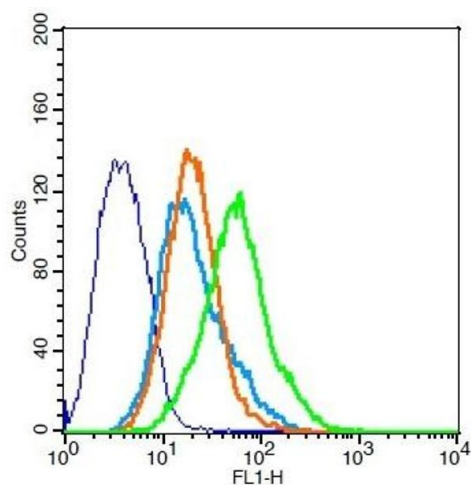
## Handling

Format:	Liquid
Concentration:	1 µg/µL
Buffer:	0.01M TBS( pH 7.4) with 1 % BSA, 0.02 % Proclin300 and 50 % Glycerol.
Preservative:	ProClin
Precaution of Use:	This product contains ProClin: a POISONOUS AND HAZARDOUS SUBSTANCE, which should be handled by trained staff only.
Storage:	4 °C,-20 °C
Storage Comment:	Shipped at 4°C. Store at -20°C for one year. Avoid repeated freeze/thaw cycles.
Expiry Date:	12 months



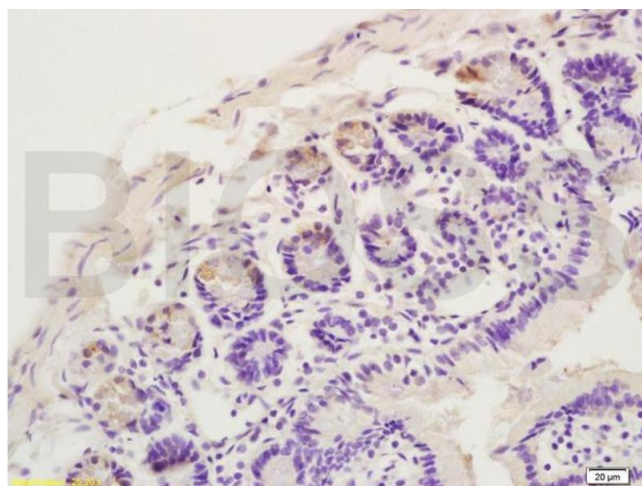
#### Immunohistochemistry (Paraffin-embedded Sections)

**Image 1.** Formalin-fixed and paraffin embedded rat intestine labeled with Anti CCR10 Polyclonal Antibody, Unconjugated at 1:200 followed by conjugation to the secondary antibody and DAB staining



#### Flow Cytometry

**Image 2.** 293FT cells probed with Rabbit Anti-CCR10 Polyclonal Antibody, Unconjugated at 1:20 for 30 minutes followed by incubation with a conjugated secondary -FITC) (green) for 30 minutes compared to control cells (blue), secondary only (light blue) and isotype control (orange).



#### Immunohistochemistry

**Image 3.** Formalin-fixed and paraffin embedded rat intestine labeled with Anti CCR10 Polyclonal Antibody, Unconjugated (ABIN733313) at 1:200 followed by conjugation to the secondary antibody and DAB staining