

Datasheet for ABIN733343

anti-Cytokeratin 1 antibody (AA 141-240)**5** Images**6** Publications[Go to Product page](#)

Overview

Quantity:	100 µL
Target:	Cytokeratin 1 (KRT1)
Binding Specificity:	AA 141-240
Reactivity:	Human, Mouse, Rat, Cow
Host:	Rabbit
Clonality:	Polyclonal
Conjugate:	This Cytokeratin 1 antibody is un-conjugated
Application:	Western Blotting (WB), ELISA, Flow Cytometry (FACS), Immunohistochemistry (Paraffin-embedded Sections) (IHC (p)), Immunocytochemistry (ICC), Immunofluorescence (Paraffin-embedded Sections) (IF (p)), Immunohistochemistry (Frozen Sections) (IHC (fro)), Immunofluorescence (Cultured Cells) (IF (cc))

Product Details

Immunogen:	KLH conjugated synthetic peptide derived from human pan cytokeratin
Isotype:	IgG
Cross-Reactivity:	Cow, Human, Mouse, Rat
Predicted Reactivity:	Dog,Pig,Horse,Chicken,Rabbit
Purification:	Purified by Protein A.

Target Details

Target:	Cytokeratin 1 (KRT1)
---------	----------------------

Target Details

Alternative Name:	Cytokeratin (KRT1 Products)
Background:	<p>Synonyms: pan-cytokeratin, pan-CK, pan CK, P-CK, wide spectrum Cytokeratin, Cytokeratins, [cytokeratins 1, 2,4,5,6,7,8,71,72,75,78].</p> <p>Background: Cytokeratins are proteins of keratin-containing intermediate filaments found in the intracytoplasmic cytoskeleton of epithelial tissue. The cytokeratins are encoded by a family encompassing 30 genes. Among them, 20 are epithelial genes and the remaining 10 are specific for trichocytes. In the cytoplasm, the keratin filaments conform a complex network which extends from the surface of the nucleus to the cell membrane. Numerous accessory proteins are involved in the genesis and maintenance of such structure. This association between the plasma membrane and the nuclear surface provides important implications for the organization of the cytoplasm and cellular communication mechanisms. Apart from the relatively static functions provided in terms of supporting the nucleus and providing tensile strength to the cell, the cytokeratin networks undergo rapid phosphate exchanges mediated depolymerization, with important implications in the more dynamic cellular processes such as mitosis and post-mitotic period, cell movement and differentiation. Cytokeratins interact with desmosomes and hemidesmosomes, thus collaborating to cell-cell adhesion and basal cell-underlying connective tissue connection.</p>

Application Details

Application Notes:	WB 1:300-5000 ELISA 1:500-1000 FCM 1:20-100 IHC-P 1:200-400 IHC-F 1:100-500 IF(IHC-P) 1:50-200 IF(IHC-F) 1:50-200 IF(ICC) 1:50-200 ICC 1:100-500
Restrictions:	For Research Use only

Handling

Format:	Liquid
Concentration:	1 µg/µL

Handling

Buffer:	0.01M TBS(pH 7.4) with 1 % BSA, 0.02 % Proclin300 and 50 % Glycerol.
Preservative:	ProClin
Precaution of Use:	This product contains ProClin: a POISONOUS AND HAZARDOUS SUBSTANCE, which should be handled by trained staff only.
Storage:	4 °C,-20 °C
Storage Comment:	Shipped at 4°C. Store at -20°C for one year. Avoid repeated freeze/thaw cycles.
Expiry Date:	12 months

Publications

Product cited in:

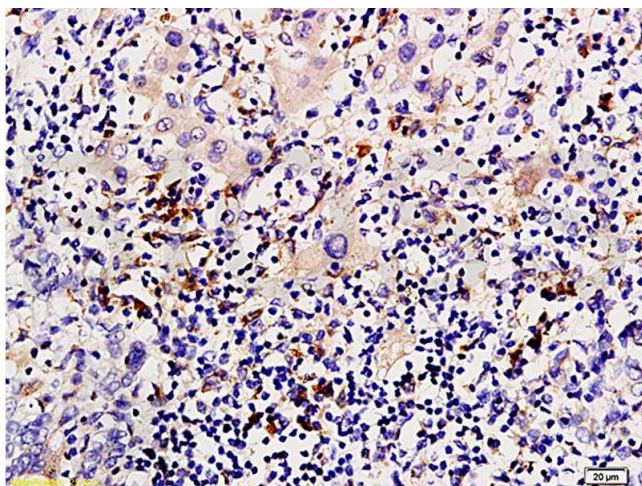
Yang, Li, Qi, Li, Zhou, Qing, Zhang, Gao: "lncRNA H19 is involved in TGF- β 1-induced epithelial to mesenchymal transition in bovine epithelial cells through PI3K/AKT Signaling Pathway." in: **PeerJ**, Vol. 5, pp. e3950, (2017) ([PubMed](#)).

Wang, Jin, Fan, Wang, Xing, Niu: "Anti-proliferative activities of finasteride in benign prostate epithelial cells require stromal fibroblasts and c-Jun gene." in: **PLoS ONE**, Vol. 12, Issue 2, pp. e0172233, (2017) ([PubMed](#)).

Chen, Zheng, Liu, Shi, Qi: "Periostin activates pathways involved in epithelial-mesenchymal transition in adamantinomatous craniopharyngioma." in: **Journal of the neurological sciences**, Vol. 360, pp. 49-54, (2016) ([PubMed](#)).

Li, Wang, Liu, Tu, He, Wang, Han, Li, Li, Tao, Cai: "Identification of apoptotic cells in the thymus of piglets infected with highly pathogenic porcine reproductive and respiratory syndrome virus." in: **Virus research**, Vol. 189, pp. 29-33, (2014) ([PubMed](#)).

There are more publications referencing this product on: [Product page](#)



Immunohistochemistry

Image 1. Formalin-fixed and paraffin embedded human liver carcinoma tissue labeled with Anti-P-CK/Cytokeratin AE1+AE3 Polyclonal Antibody, Unconjugated (ABIN733343) at 1:200 followed by conjugation to the secondary antibody and DAB staining

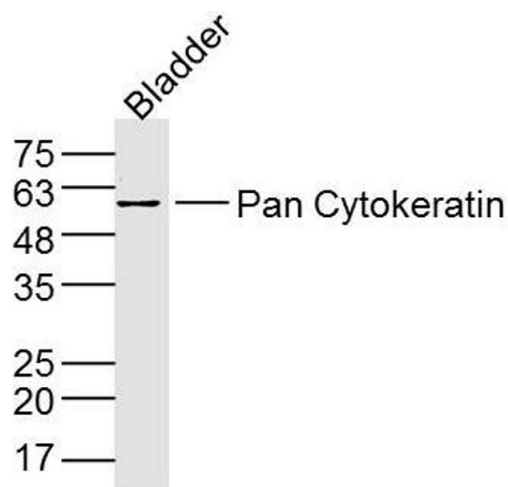
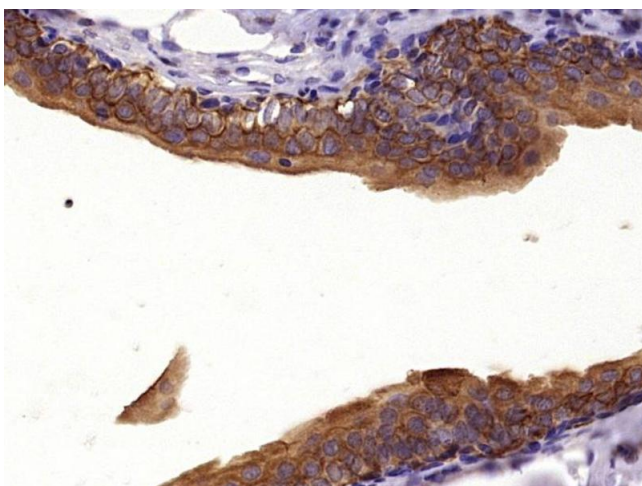


Image 2. Mouse Bladder lysates probed with Pan Cytokeratin Polyclonal Antibody, Unconjugated at 1:300 dilution and 4°C overnight incubation. Followed by conjugated secondary antibody incubation at 1:10000 for 60 min at 37°C.



Immunohistochemistry (Paraffin-embedded Sections)

Image 3. Paraformaldehyde-fixed, paraffin embedded Rat bladder Antigen retrieval by boiling in sodium citrate buffer (pH6.0) for 15min Block endogenous peroxidase by 3% hydrogen peroxide for 20 minutes Blocking buffer (normal goat serum) at 37°C for 30min Antibody incubation with Pan Cytokeratin Polyclonal Antibody, Unconjugated at 1:400 overnight at 4°C, DAB staining.

Please check the [product details page](#) for more images. Overall 5 images are available for ABIN733343.