

Datasheet for ABIN733508
anti-MASP1 antibody (AA 20-120)[Go to Product page](#)

2 Images

Overview

Quantity:	100 µL
Target:	MASP1
Binding Specificity:	AA 20-120
Reactivity:	Human, Mouse, Rat
Host:	Rabbit
Clonality:	Polyclonal
Conjugate:	This MASP1 antibody is un-conjugated
Application:	Western Blotting (WB), ELISA, Immunofluorescence (Paraffin-embedded Sections) (IF (p)), Immunohistochemistry (Paraffin-embedded Sections) (IHC (p))

Product Details

Immunogen:	KLH conjugated synthetic peptide derived from human MASP
Isotype:	IgG
Cross-Reactivity:	Human, Mouse, Rat
Predicted Reactivity:	Dog,Cow,Pig,Rabbit
Purification:	Purified by Protein A.

Target Details

Target:	MASP1
Alternative Name:	MASP (MASP1 Products)

Target Details

Background:	<p>Synonyms: 3MC1, MAP1, MASP, RaRF, CRARF, MASP3, MAP44, PRSS5, CRARF1, Mannan-binding lectin serine protease 1, Complement factor MASP-3, Complement-activating component of Ra-reactive factor, Mannose-binding lectin-associated serine protease 1, MASP-1, Mannose-binding protein-associated serine protease, Ra-reactive factor serine protease p100, Serine protease 5, MASP1</p> <p>Background: Functions in the lectin pathway of complement, which performs a key role in innate immunity by recognizing pathogens through patterns of sugar moieties and neutralizing them. The lectin pathway is triggered upon binding of mannan-binding lectin (MBL) and ficolins to sugar moieties which leads to activation of the associated proteases MASP1 and MASP2. Functions as an endopeptidase and may activate MASP2 or C2 or directly activate C3 the key component of complement reaction. Isoform 2 may have an inhibitory effect on the activation of the lectin pathway of complement or may cleave IGFBP5.</p>
Gene ID:	5648
UniProt:	P48740
Pathways:	Complement System

Application Details

Application Notes:	WB 1:300-5000 ELISA 1:500-1000 IHC-P 1:200-400 IF(IHC-P) 1:50-200
Restrictions:	For Research Use only

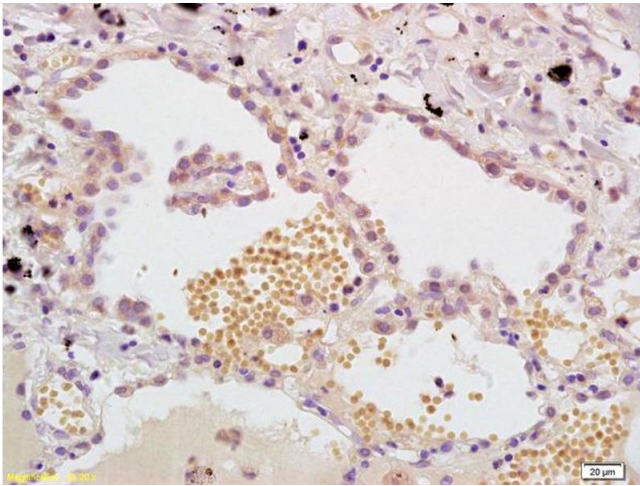
Handling

Format:	Liquid
Concentration:	1 µg/µL
Buffer:	0.01M TBS(pH 7.4) with 1 % BSA, 0.02 % Proclin300 and 50 % Glycerol.
Preservative:	ProClin
Precaution of Use:	This product contains ProClin: a POISONOUS AND HAZARDOUS SUBSTANCE, which should be handled by trained staff only.
Storage:	4 °C,-20 °C

Handling

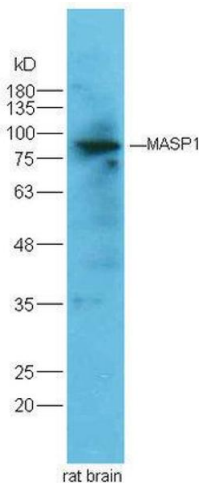
Storage Comment:	Shipped at 4°C. Store at -20°C for one year. Avoid repeated freeze/thaw cycles.
Expiry Date:	12 months

Images



Immunohistochemistry

Image 1. Formalin-fixed and paraffin embedded human lung carcinoma labeled with Anti- MASP Polyclonal Antibody, Unconjugated (ABIN733508) at 1:200, followed by conjugation to the secondary antibody and DAB staining.



Western Blotting

Image 2. Rat brain lysates probed with Rabbit Anti-MASP Polyclonal Antibody at 1:5000 90min in 37°C.