

Datasheet for ABIN7336296

anti-TLR2 antibody**1** Image[Go to Product page](#)

Overview

Quantity:	50 µL
Target:	TLR2
Reactivity:	Human
Host:	Rabbit
Clonality:	Polyclonal
Conjugate:	This TLR2 antibody is un-conjugated
Application:	Immunohistochemistry (IHC), ELISA

Product Details

Immunogen:	Fusion protein of Human TLR2
Isotype:	IgG
Cross-Reactivity:	Human, Mouse
Purification:	Antigen affinity purification

Target Details

Target:	TLR2
Alternative Name:	TLR2 (TLR2 Products)
Background:	Background: The protein encoded by this gene is a member of the Toll-like receptor (TLR) family which plays a fundamental role in pathogen recognition and activation of innate immunity. TLRs are highly conserved from Drosophila to humans and share structural and functional similarities. They recognize pathogen-associated molecular patterns (PAMPs) that

Target Details

are expressed on infectious agents, and mediate the production of cytokines necessary for the development of effective immunity. The various TLRs exhibit different patterns of expression. This gene is expressed most abundantly in peripheral blood leukocytes, and mediates host response to Gram-positive bacteria and yeast via stimulation of NF-kappaB.

Aliases: CD282 antibody, CD282 antigen antibody, TIL 4 antibody, TIL4 antibody, TLR 2 antibody, TLR2 antibody, TLR2_HUMAN antibody, Toll like receptor 2 antibody, Toll like receptor 2 precursor antibody, Toll-like receptor 2 antibody, Toll/interleukin 1 receptor like 4 antibody, Toll/interleukin 1 receptor like protein 4 antibody, Toll/interleukin receptor like protein 4 antibody, Toll/interleukin-1 receptor-like protein 4 antibody

UniProt: [O60603](#)

Pathways: [TLR Signaling](#), [Activation of Innate immune Response](#), [Cellular Response to Molecule of Bacterial Origin](#), [Positive Regulation of Immune Effector Process](#), [Production of Molecular Mediator of Immune Response](#), [Toll-Like Receptors Cascades](#)

Application Details

Application Notes: ELISA:1:2000-1:5000, IHC:1:25-1:100,

Restrictions: For Research Use only

Handling

Format: Liquid

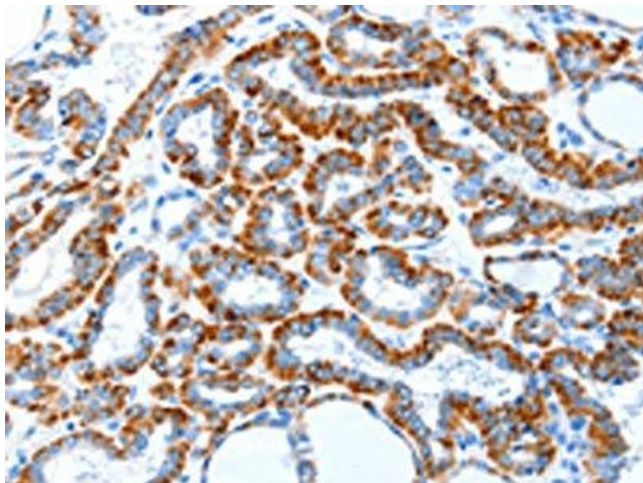
Buffer: -20 °C, pH 7.4 PBS, 0.05 % Sodium azide, 40 % Glycerol

Preservative: Sodium azide

Precaution of Use: This product contains Sodium azide: a POISONOUS AND HAZARDOUS SUBSTANCE which should be handled by trained staff only.

Storage: -20 °C,-80 °C

Storage Comment: Upon receipt, store at -20°C or -80°C. Avoid repeated freeze.



Immunohistochemistry

Image 1. The image on the left is immunohistochemistry of paraffin-embedded Human thyroid cancer tissue using (TLR2 Antibody) at dilution 1/30, on the right is treated with fusion protein. (Original magnification: x200)