



[Go to Product page](#)

Datasheet for ABIN733778  
**anti-alpha Actinin 4 antibody**

1 Image

### Overview

Quantity:	100 µL
Target:	alpha Actinin 4 (ACTN4)
Reactivity:	Human, Mouse, Rat
Host:	Rabbit
Clonality:	Polyclonal
Conjugate:	This alpha Actinin 4 antibody is un-conjugated
Application:	Western Blotting (WB), Immunohistochemistry (Paraffin-embedded Sections) (IHC (p)), Flow Cytometry (FACS), Immunofluorescence (Cultured Cells) (IF (cc))

### Product Details

Immunogen:	KLH conjugated synthetic peptide derived from human Actinin alpha 4
Isotype:	IgG
Cross-Reactivity:	Human, Mouse, Rat
Purification:	Purified by Protein A.

### Target Details

Target:	alpha Actinin 4 (ACTN4)
Alternative Name:	alpha Actinin 4 ( <a href="#">ACTN4 Products</a> )
Background:	Synonyms: Actinin alpha 4, alpha-Actinin 4, alpha Actinin-4, actinin 4, actinin4, actinin-4, ACTN 4, ACTN4, DKFZp686K23158, F actin cross linking protein, FSGS 1, FSGS, FSGS1, Non muscle alpha actinin 4.

## Target Details

---

Background: Loading Control Alpha actinins belong to the spectrin gene superfamily which represents a diverse group of cytoskeletal proteins, including the alpha and beta spectrins and dystrophins. Alpha actinin is an actin-binding protein with multiple roles in different cell types. In nonmuscle cells, the cytoskeletal isoform is found along microfilament bundles and adherens-type junctions, where it is involved in binding actin to the membrane. In contrast, skeletal, cardiac, and smooth muscle isoforms are localized to the Z-disc and analogous dense bodies, where they help anchor the myofibrillar actin filaments. This gene encodes a nonmuscle, alpha actinin isoform which is concentrated in the cytoplasm, and thought to be involved in metastatic processes. Mutations in this gene have been associated with focal and segmental glomerulosclerosis. [provided by RefSeq, Jul 2008].

---

Gene ID: 81

---

Pathways: [Proton Transport](#)

## Application Details

---

Application Notes: WB: 1:100-1000, IHC-P: 1:100-500, IF(IHC-P): 1:50-200  
Optimal working dilution should be determined by the investigator.

---

Restrictions: For Research Use only

## Handling

---

Format: Liquid

---

Concentration: 1 µg/µL

---

Buffer: Aqueous buffered solution containing 1 % BSA, 50 % glycerol and 0.09 % sodium azide.

---

Preservative: Sodium azide

---

Precaution of Use: This product contains Sodium azide: a POISONOUS AND HAZARDOUS SUBSTANCE which should be handled by trained staff only.

---

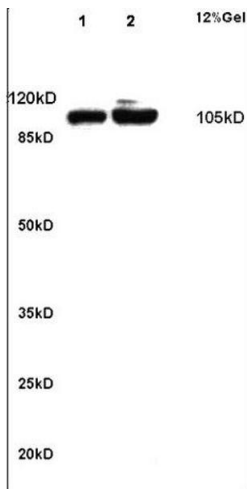
Storage: -20 °C

---

Storage Comment: Store at -20°C for 12 months.

---

Expiry Date: 12 months



### SDS-PAGE

**Image 1.** Lane 1: rat kidney lysates Lane 2: rat brain lysates probed with Anti alpha Actinin 4 Polyclonal Antibody, Unconjugated (ABIN733778) at 1:200 in 4 °C. Followed by conjugation to secondary antibody at 1:3000 90min in 37 °C. Predicted band 105kD. Observed band size: 105kD.