

Datasheet for ABIN733808
anti-DRD3 antibody (AA 352-446)[Go to Product page](#)

3 Images

1 Publication

Overview

Quantity:	100 µL
Target:	DRD3
Binding Specificity:	AA 352-446
Reactivity:	Human, Rat, Mouse
Host:	Rabbit
Clonality:	Polyclonal
Conjugate:	This DRD3 antibody is un-conjugated
Application:	Western Blotting (WB), ELISA, Immunohistochemistry (Paraffin-embedded Sections) (IHC (p)), Immunofluorescence (Cultured Cells) (IF (cc)), Immunofluorescence (Paraffin-embedded Sections) (IF (p)), Immunohistochemistry (Frozen Sections) (IHC (fro))

Product Details

Immunogen:	KLH conjugated synthetic peptide derived from mouse DRD3
Isotype:	IgG
Cross-Reactivity:	Human, Mouse, Rat
Purification:	Purified by Protein A.

Target Details

Target:	DRD3
Alternative Name:	DRD3 (DRD3 Products)

Target Details

Background:	Synonyms: D3R, D(3) dopamine receptor, Dopamine D3 receptor, Drd3 Background: Dopamine receptor whose activity is mediated by G proteins which inhibit adenylyl cyclase. Promotes cell proliferation (By similarity).
Gene ID:	13490
UniProt:	P30728
Pathways:	Regulation of Systemic Arterial Blood Pressure by Hormones , cAMP Metabolic Process , Regulation of G-Protein Coupled Receptor Protein Signaling , Proton Transport , Negative Regulation of Transporter Activity

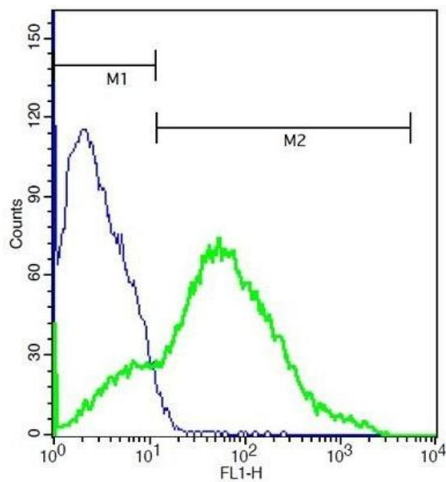
Application Details

Application Notes:	WB 1:300-5000 ELISA 1:500-1000 IHC-P 1:200-400 IHC-F 1:100-500 IF(IHC-P) 1:50-200 IF(IHC-F) 1:50-200 IF(ICC) 1:50-200
Restrictions:	For Research Use only

Handling

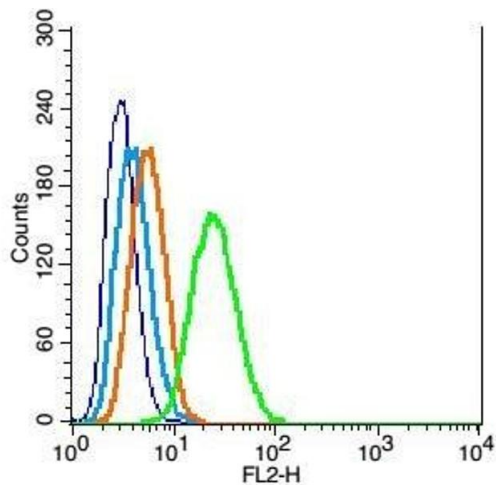
Format:	Liquid
Concentration:	1 µg/µL
Buffer:	0.01M TBS(pH 7.4) with 1 % BSA, 0.02 % Proclin300 and 50 % Glycerol.
Preservative:	ProClin
Precaution of Use:	This product contains ProClin: a POISONOUS AND HAZARDOUS SUBSTANCE, which should be handled by trained staff only.
Storage:	4 °C,-20 °C
Storage Comment:	Shipped at 4°C. Store at -20°C for one year. Avoid repeated freeze/thaw cycles.
Expiry Date:	12 months

Product cited in: Xu, Wang, Chen, Chen, Li, Shao, Li, Lu, Zhou: "Dopamine D1 receptor activation induces dehydroepiandrosterone sulfotransferase (SULT2A1) in HepG2 cells." in: **Acta pharmacologica Sinica**, Vol. 35, Issue 7, pp. 889-98, (2014) ([PubMed](#)).



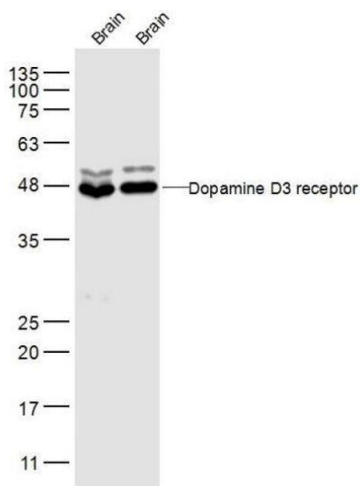
Flow Cytometry

Image 1. Mouse brain cells probed with Rabbit Anti-DRD3 Polyclonal Antibody (ABIN733808) at 1:50 for 40 minutes followed by incubation with Goat Anti-Rabbit IgG FITC conjugated secondary at 1:100 (green) for 40 minutes compared to control cells (blue)



Flow Cytometry

Image 2. RSC96 cells probed with DRD3 Polyclonal Antibody, Unconjugated at 1:100 for 30 minutes followed by incubation with a conjugated secondary (PE Conjugated) (green) for 30 minutes compared to control cells (blue), secondary only (light blue) and isotype control (orange).



Western Blotting

Image 3. Lane 1: Mouse Brain lysates Lane 2: Rat Brain lysates probed with Dopamine D3 receptor Polyclonal Antibody, Unconjugated at 1:500 dilution and 4°C overnight incubation. Followed by conjugated secondary antibody incubation at 1:10000 for 60 min at 37°C.