

Datasheet for ABIN733823

**anti-Cytokeratin 7 antibody (AA 251-350)**[1 Image](#)[1 Publication](#)[Go to Product page](#)

## Overview

Quantity:	100 µL
Target:	Cytokeratin 7 (KRT7)
Binding Specificity:	AA 251-350
Reactivity:	Human, Rat, Mouse
Host:	Rabbit
Clonality:	Polyclonal
Conjugate:	This Cytokeratin 7 antibody is un-conjugated
Application:	Western Blotting (WB), Immunohistochemistry (Paraffin-embedded Sections) (IHC (p)), ELISA, Immunohistochemistry (Frozen Sections) (IHC (fro)), Immunofluorescence (Cultured Cells) (IF (cc)), Immunofluorescence (Paraffin-embedded Sections) (IF (p))

## Product Details

Immunogen:	KLH conjugated synthetic peptide derived from mouse CK7
Isotype:	IgG
Cross-Reactivity:	Human, Mouse, Rat
Purification:	Purified by Protein A.

## Target Details

Target:	Cytokeratin 7 (KRT7)
Alternative Name:	CK7 ( <a href="#">KRT7 Products</a> )

## Target Details

---

**Background:** Synonyms: K7, Krt2-7, D15Wsu77e, Keratin, type II cytoskeletal 7, Cytokeratin-7, CK-7, Keratin-7, Type-II keratin Kb7, Krt7

Background: Cytokeratins are a subfamily of intermediate filament proteins and are characterized by a remarkable biochemical diversity, represented in human epithelial tissues by at least 20 different polypeptides. They range in molecular weight between 40 kDa and 68 kDa and isoelectric pH between 4.9-7.8. The individual human cytokeratins are designated 1 to 20. The various epithelia in the human body usually express cytokeratins which are not only characteristic of the type of epithelium, but also related to the degree of maturation or differentiation within an epithelium. Cytokeratin subtype expression patterns are used to an increasing extent in the distinction of different types of epithelial malignancies. The cytokeratins are not only of assistance in the differential diagnosis of tumors using immunohistochemistry on tissue sections, but are also a useful tool in cytopathology and flow cytometric assays.

---

**Gene ID:** 110310

---

**UniProt:** [Q9DCV7](#)

## Application Details

---

**Application Notes:** WB 1:300-5000  
ELISA 1:500-1000  
IHC-P 1:200-400  
IHC-F 1:100-500  
IF(IHC-P) 1:50-200  
IF(IHC-F) 1:50-200  
IF(ICC) 1:50-200

---

**Restrictions:** For Research Use only

## Handling

---

**Format:** Liquid

---

**Concentration:** 1 µg/µL

---

**Buffer:** 0.01M TBS( pH 7.4) with 1 % BSA, 0.02 % Proclin300 and 50 % Glycerol.

---

**Preservative:** ProClin

---

**Precaution of Use:** This product contains ProClin: a POISONOUS AND HAZARDOUS SUBSTANCE, which should be handled by trained staff only.

---

## Handling

---

Storage: 4 °C,-20 °C

---

Storage Comment: Shipped at 4°C. Store at -20°C for one year. Avoid repeated freeze/thaw cycles.

---

Expiry Date: 12 months

---

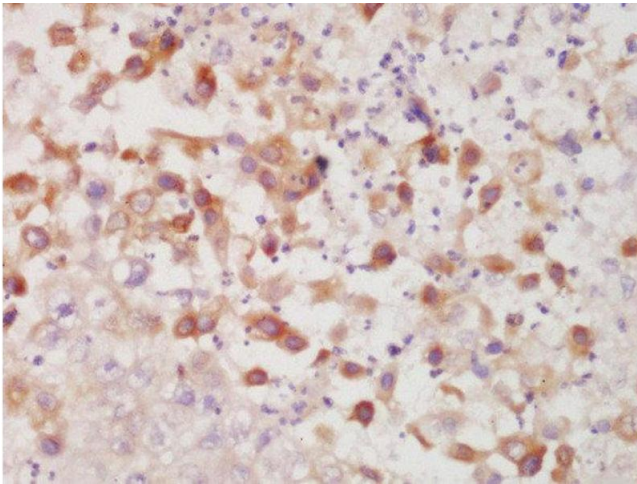
## Publications

---

Product cited in: Zhang, Huang, Han, Hu, Yi, Yao, He: "Functional regeneration of irradiated salivary glands with human amniotic epithelial cells transplantation." in: **International journal of clinical and experimental pathology**, Vol. 6, Issue 10, pp. 2039-47, (2013) ([PubMed](#)).

## Images

---



### Immunohistochemistry (Paraffin-embedded Sections)

**Image 1.** Formalin-fixed and paraffin embedded human lung carcinoma labeled with Rabbit Anti-CK7 Polyclonal Antibody, Unconjugated at 1:200 followed by conjugation to the secondary antibody and DAB staining